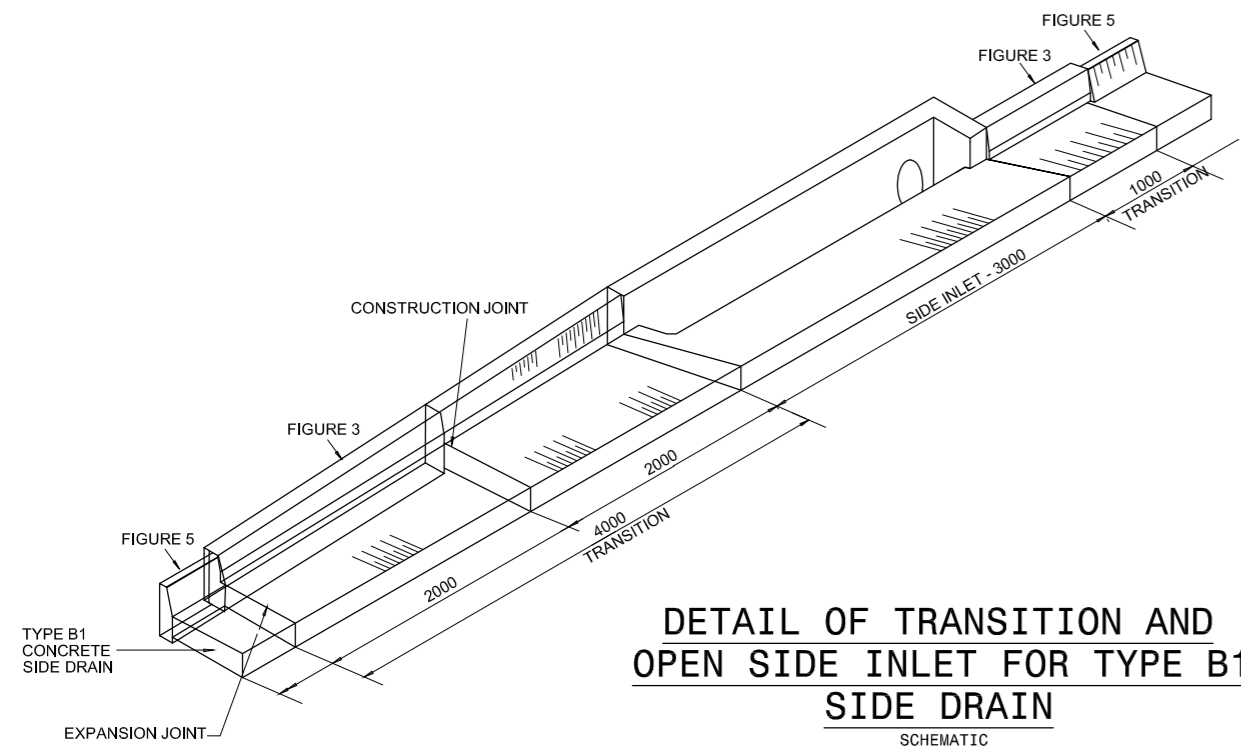
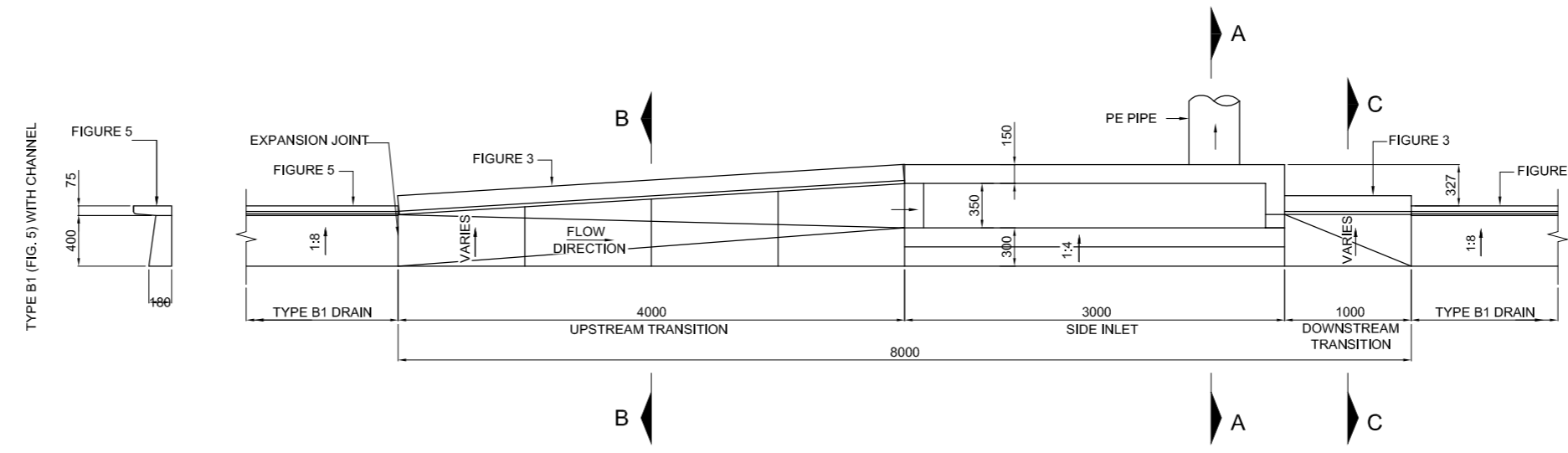


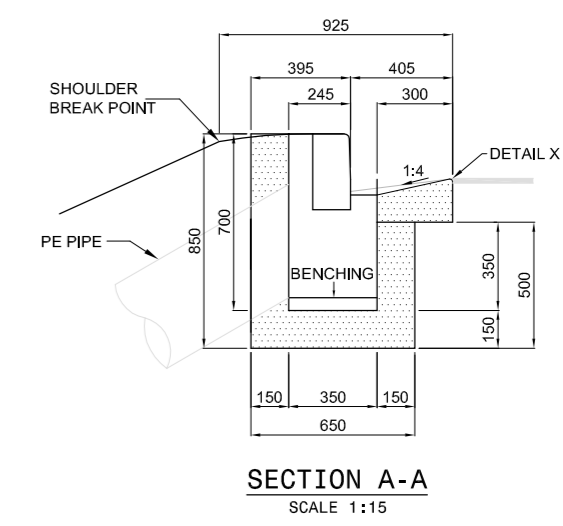
# DRAINAGE TYPICALS: PRECAST SIDE INLETS DIMENTIONS



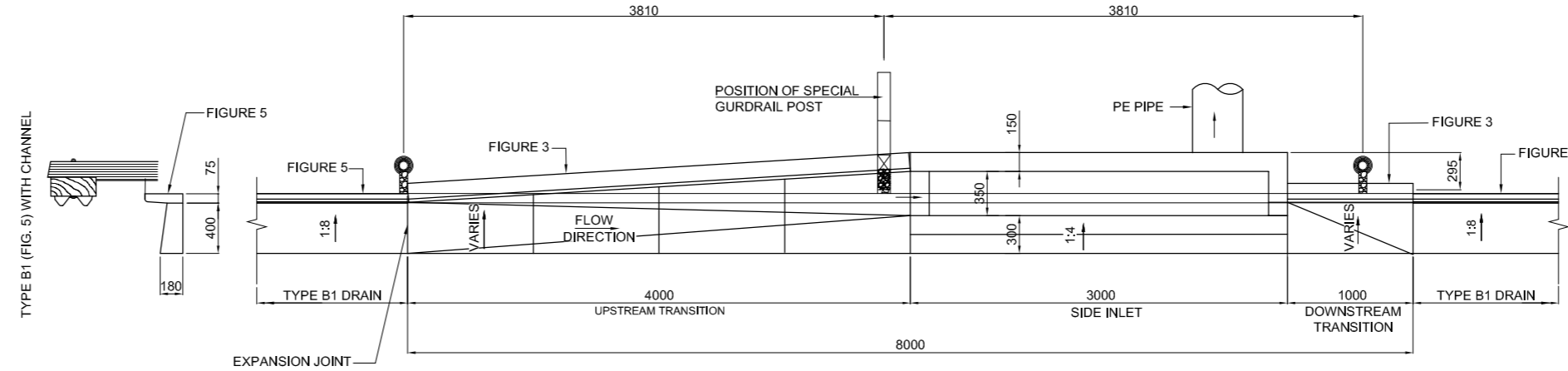
**DETAIL OF TRANSITION AND OPEN SIDE INLET FOR TYPE B1 SIDE DRAIN**  
SCHEMATIC



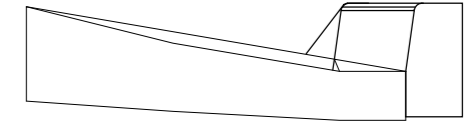
**PLAN OF TRANSITION AT OPEN SIDE INLET FOR TYPE B1 SIDE DRAIN (GUARDRAIL NOT SHOWN)**  
SCALE 1:25



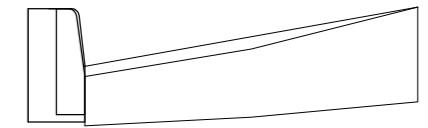
**SECTION A-A**  
SCALE 1:15



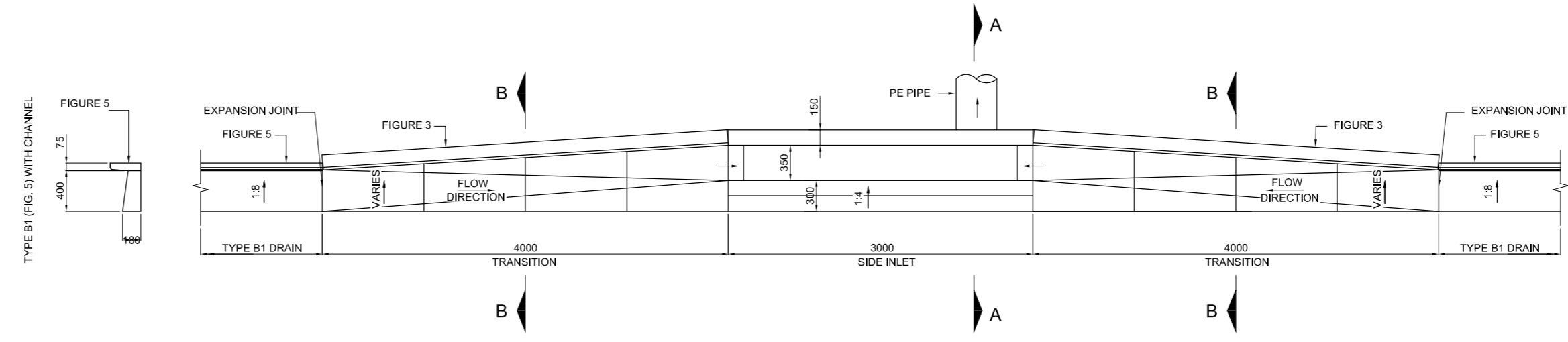
**PLAN OF TRANSITION AT OPEN SIDE INLET FOR TYPE B1 SIDE DRAIN (WITH GUARDRAIL)**  
SCALE 1:25



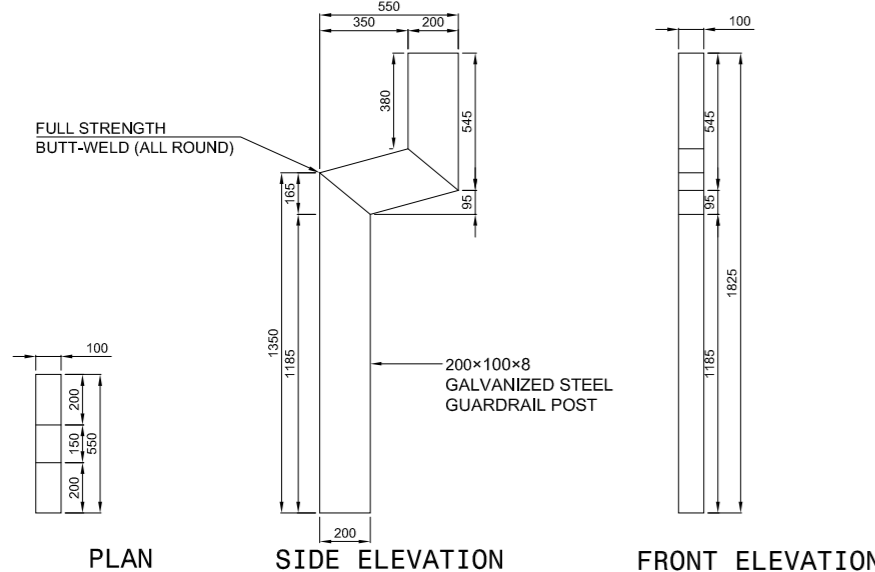
**SECTION B-B**  
SCALE 1:10



**SECTION C-C**  
SCALE 1:10



**PLAN OF TRANSITION AT OPEN SIDE INLET FOR TYPE B1 SIDE DRAIN AT LOW POINTS (GUARDRAIL NOT SHOWN)**  
SCALE 1:25



**DETAIL OF SPECIAL GUARDRAIL POST**  
SCALE 1:15

- NOTES:**
- MATERIAL:
    - REINFORCEMENT: SABS 920, LATEST REVISION. HIGH TENSILE STEEL: WORKING STRESS - 210 mPa.
    - CONCRETE: SIDE DRAINS AND TRANSITIONS - CLASS 30/19. SIDE INLETS AND MANHOLES - CLASS 30/19. ENERGY BREAKERS - CLASS 30/19. ANCHOR BLOCKS - CLASS 30/19. BENCHING - CLASS 15/19.
  - THE TYPE OF SURFACE FINISH IS INDICATED AS F1, F2 & U2. F - FORMED SURFACES. U - UNFORMED SURFACES.
  - MINIMUM CONCRETE COVER TO MAIN REINFORCEMENT IS 50mm.
  - ALL EXPOSED CORNERS MUST BE ROUNDED OFF TO A MINIMUM RADIUS OF 10mm OR BE CHAMFERED 25mm x 25mm.
  - THE POSITION OF SIDE INLETS, DOWN PIPES, MANHOLES AND ENERGY BREAKERS ARE INDICATED ON THE DRAINAGE LAYOUT PLANS.
  - SIDE INLETS ARE DESIGNED TO TAKE A WHEEL LOAD OF 40kN.
  - SPEC: SANS 674  
SPIRALLY WOUND PE PIPES: MATERIAL PE100 CLASS SN8

- SIDE INLETS (8m LONG)**
- ELEMENTS INCLUDED IN PAY ITEM 23.05 (a) and (b)
- EXCAVATION
  - BEDDING
  - SCREED
  - PRECAST BOX UNIT
  - BENCHING
  - UP AND DOWN STREAM TRANSITIONS
  - FIG. 3 PRECAST KERBS
  - INSTALLATION
- ELEMENTS MEASURED ELSEWHERE
- SAW CUTTING ASPHALT SURFACE
  - DOWN PIPES

CONSTRUCTION RECORD (AS-BUILT) WORKS CONTRACT ENGINEER Name: _____ Prof. Reg. No.: _____ Date: _____		<b>SNA</b> CIVIL AND STRUCTURAL ENGINEERS (Pty) LTD SNAVIA BUILDING 285 ALBERTUS STREET LA MONTAGNE 0184 P. O. Box 72727 LYNNWOOD RIDGE 0040 Tel: 012-842 0000 Fax: 012-803 4429 Email: info@sna.co.za web: www.sna.co.za		TRANS AFRICAN CONCESSIONS (PTY) LTD BLOCK 8 THORNHILL OFFICE PARK 94 BEKKER ROAD MIDRAND PO Box 10817 VORUNA VALLEY 1686 Tel: 011-805 8788 Fax: 011-805 8789 Email: gesterhuyzen@trac4.co.za www.trac4.co.za		DESIGNED BY NAME: G. LOUBSER Prof. Reg. No.: 880359 CHECKED BY NAME: J.B.W. STOLTZ Prof. Reg. No.: 980512 DRAWN BY NAME: L.V.D. MERKE		CONSULTANT APPROVAL Name: J.W.B. STOLTZ Prof. Reg. No.: 980512 Date: APRIL 2016		HEAD OFFICE 48 Tambolie Avenue Val de Grace Pretoria 0164 PO Box 415 Pretoria 0001 South Africa Tel: (012) 844 8000		NORTHERN REGION 38 Ida Street Menlo Park Pretoria 0081 Private Bag X17 Lynnwood Ridge 0040 Tel: (012) 426 6200		ACCEPTANCE THIS ACCEPTANCE IS FOR PROCEDURAL AND ADMINISTRATIVE REVIEW PURPOSES ONLY AND DOES NOT ATTRACT LEGAL LIABILITY OR LIABILITY OF ANY KIND FROM WHATSOEVER CAUSE OR HOWEVER ARISING for the SA NATIONAL ROADS AGENCY SOC. LTD. Date: _____		PROJECT DESCRIPTION MAPUTO DEVELOPMENT CORRIDOR (MDC) PRETORIA TO LEBOMBO BORDER POST ROUTINE ROAD MAINTENANCE DRAWING DESCRIPTION DRAINAGE TYPICALS: PRECAST SIDE INLETS DIMENSIONS SCALE: AS SHOWN (A0)		PROJECT NUMBER DRAWING LOCATION DATA ROUTE SECTION DRAWING km DISTANCE DRAWING TYPE BRIDGE/STRUCTURE No. CONSULTANT DRAWING No. SANRAL DOCUMENT #		TRAC/MAINT-2019-01 START END PRETORIA LEBOMBO BORDER ROADS - TYPICAL DETAILS SNA-TP1915-D5 VER V1	
--	--	--	--	--	--	--	--	--	--	---	--	--	--	---	--	--	--	---	--	--	--