

TRAC
TRANS AFRICAN CONCESSIONS

Making a
Difference

**MAKING A
DIFFERENCE
A KILOMETRE
AT A TIME**

TRAC

TRANS AFRICAN CONCESSIONS

A MESSAGE FROM THE CEO

HOPE – A SMALL WORD WITH ENORMOUS SIGNIFICANCE!



Despite being only four letters long and containing merely one syllable, the word hope is so powerful that it evokes optimism and progress.

Hope is also something South Africans and Mozambicans understand all too well. Our histories are filled with struggles, adversities and turbulence, which despite putting us through hardships, also helped create two resilient nations that have a deep understanding of hope. This hope pushes us to find the silver lining in each situation and seek opportunities that enable us to rise.

Hope can move people out of untenable situations and into better lives, and this is why hope is the word and feeling that navigates all of our corporate social investment (CSI) endeavours.

The past few years have been tough, especially for South Africans. With the country in an economic downturn post the Covid-19 pandemic, communities have faced numerous socio-economic challenges that continue to negatively impact ordinary people's day-to-day lives. There is no denying that in times like these CSI becomes critically important.

Developing an impactful CSI strategy and approach, with real potential to change people's lives for the better, is critical to TRAC's CSI success. In times like these, improving people's lives by investing in capital projects and the people themselves takes precedence.

Although CSI undoubtedly creates positive brand awareness, this portfolio isn't about that! Indeed, getting acknowledgment for doing good is wonderful, but that isn't the aim of our programmes. Nothing is more rewarding than visiting an ongoing or concluded project and seeing the difference it has made. As you will see from the stories in this book, CSI requires dedicated purpose-driven teamwork.

Managing CSI within a company such as TRAC is not an eight-to-five job, but a full-time commitment that involves vision, empathy, long hours and plenty of passion for people.

Every single one of our CSI projects requires dedication and commitment, two key elements that our CSI representatives have in abundance. And, seeing the smiles of the beneficiaries' faces, makes it all worthwhile!

Over the years, our CSI programme has evolved from being 'charity-based' (giving when we had a little extra) to becoming an intentional effort to create value and sustainability for the broader communities along the Maputo Corridor. In more recent times, we started roping in some of our key contractors and suppliers to boost the success of our CSI efforts further. These stakeholders have committed to actively re-engineering their employment plans, services and value chains to benefit local economies and communities.

Besides creating an effective way of giving back, CSI also has a humbling effect. It encourages us to look past the surface and delve deeper into what is truly important, influential and rewarding when it comes to community support.

Our CSI key focus areas are education; health and welfare; sport and culture; small, medium and micro-enterprise development and support; the environment and road safety.

Our CSI initiatives set us apart as a private company, enabling us to do good for others while cementing a reputation as 'the brand that cares', which, we really do! This public sentiment is not only evident from various interactions with stakeholders, but also from the numerous awards we have won over the past 25 years.

The most prestigious of these to date is the 2022 Kruger Lowveld Chamber of Business and Tourism's (KLCBT) President's Award. On presentation of this award in October 2022, the KLCBT's reigning president praised TRAC for going above and beyond our mandate in service delivery, community support and economic development.

I hope that the stories in this book provide joy and a deeper understanding of the struggles and challenges of our fellowmen. I hope it further motivates and inspires you and others to help improve communities and individuals, regardless of the magnitude of that contribution, because every little bit helps!





ENTERPRISE DEVELOPMENT

Bringing an entrepreneur's dream to fruition	07
New gym gets Emthonjeni residents moving	08
EHC set to boost local economy	09
Helping hawkers become self-sustainable	11

ENVIRONMENT

A chance to heal ensures new life	15
Reducing impacts on wildlife and improving motorist safety	17
Ensuring conservation and infrastructure development can co-exist	19
Road construction and maintenance go a long way	21
TRAC's war on waste	22

EDUCATION & SKILLS DEVELOPMENT

Adel graduates despite the odds	25
Developing skills through learnerships and bursaries	27
Successful e-Learning programme changes lives	29
Learning life skills through play	31
Mastering reading for meaning	33
Flagship project an anchor of education in Nkomazi	35

SPORT & CULTURE

Paddling towards a decade on the Crocodile River	39
TRAC brings Elands Marathon back	41
TRAC and Innibos: 16 years in the making	43
Dullstroom revved by the National Rally	45
Quality citrus and Rugby Legends, a sweet combination!	47
Communities score from TRAC and RCL Foods	49

SPORT & CULTURE CONT.

TRAC gives learners a sporting chance!	51
Giving Sunrise the advantage	53
Rugby clubs get their kit on	54

HEALTH & WELFARE

Meeting our communities' needs	57
Aging is a privilege, not a predicament	59
Bringing healthcare to communities	60
Mandela Day inspiration during Covid-19	61
Donated laptops to boost tourism	63
Old but always trendy, that's our Joe	64

ROAD SAFETY

Driving socio-economic development	67
Easing border congestion to ensure road safety	68
Better roads equal a better quality of life for all	69
Showing support of the National Development Plan	71
One life lost is one too many	73
Cattle visibility project takes shape	75
New walkway ensures learner safety	76
Little ones always eager to learn about road safety	77

MAPUTO CORRIDOR

Empowering people and changing lives	81
Making a mark at FACIM	82
Keeping schools open during Covid-19	83
Putting road users first	84
Infrastructure development and maintenance boost education	85

TRAC

TRAC

TRANS AFRICAN CONCESSION

TRANS AFRICAN CONCESSION

TRAC

TRANS AFRICAN CONCESSION



LIMA
LIMA RURAL DEVELOPMENT FOUNDATION
Certificate of Competency
This Certificate is awarded to
GOODNESS TSHOBOLO
9603140924087
For successfully completing
the programme leading to the award of a Certificate of Competency in the field of [unclear]

LIMA
LIMA RURAL DEVELOPMENT FOUNDATION
Certificate of Competency
This Certificate is awarded to
Alice ZODWA CHETTY
875220649080
For successfully completing
the programme leading to the award of a Certificate of Competency in the field of [unclear]

LIMA
LIMA RURAL DEVELOPMENT FOUNDATION
Certificate of Competency
This Certificate is awarded to
DANISILE NKUNA
9511180910082
For successfully completing
the programme leading to the award of a Certificate of Competency in the field of [unclear]

LIMA
LIMA RURAL DEVELOPMENT FOUNDATION
Certificate of Competency
This Certificate is awarded to
GOODNESS TSHOBOLO
9603140924087
For successfully completing
the programme leading to the award of a Certificate of Competency in the field of [unclear]



AC TRAC
CONCESSIONS TRANS AFRICAN CONCESSIONS

TRAC
TRANS AFRICAN CONCESSIONS

AC TRAC
CONCESSIONS TRANS AFRICAN CONCESSIONS

TRAC
TRANS AFRICAN CONCESSIONS

LIMA
LIMA RURAL DEVELOPMENT
FOUNDATION
Certificate of Competency

LIMA
LIMA RURAL DEVELOPMENT
FOUNDATION
Certificate of Competency
ROSTER NOMSA AHO
8103201026008

LIMA
LIMA RURAL DEVELOPMENT
FOUNDATION
Certificate of Competency
LINA CHIMUSSE
061886

LIMA
LIMA RURAL DEVELOPMENT
FOUNDATION
Certificate of Competency
QUEENETH SIBONGALAMUSA NEDOU
9309180292084

LIMA
LIMA RURAL DEVELOPMENT
FOUNDATION
Certificate of Competency
ALBERT KAMBU SHABANGU
73092542988

ENTERPRISE
DEVELOPMENT

TOGETH
ADVANC
SMALL
ENTERP
DEVELO

Info Centre: 0860 1
www.seda.org.za

BRINGING ENTREPRENEUR'S DREAM TO FRUITION

ENTREPRENEURS DRIVE INNOVATION AND IMPROVE LIVES BY CREATING JOBS AND BOOSTING THE ECONOMY.



They also spur social change and often improve the way people go about their work. This is the case with project management and general construction specialist Bongani Zwane, who lost his job when the company he worked for closed down.

TRAC first met Bongani when he was the construction foreman on our corporate social investment (CSI) project to upgrade Mpumalanga-based Thanda Primary School in 2018.

When the company he worked for ceased operations, he was left unemployed. While he had already established his own construction company, Inkokheli Projects, at the time, it was not operational as he did not have enough knowledge and experience to adhere to all the requirements for a newly registered company.

Months later, TRAC contacted Bongani to do some maintenance work at the school and he was grateful for the opportunity.

His ability and work ethic were so impressive that TRAC provided him with a grant and mentor to assist him to develop Inkokheli Projects and get the company off the ground.

Bongani was able to use TRAC's maintenance yard rent-free; and our truck and equipment, at no cost. We also provided him with mentorship, training and on-the-job guidance while he was working on the repair and maintenance of the TRAC Matsulu hawker facility.

To help ensure his success, TRAC also sent Bongani for business development training, where he learnt the fundamentals of running a business, including financial management, business management, procurement management and bookkeeping.

In 2022, TRAC contracted Inkokheli Projects to upgrade the Dullstroom Epilepsy Centre, another one of our CSI beneficiaries. Since then, his company has grown from strength to strength.

"TRAC has made a significant impact in my life. It has also bettered my family's lives and the lives of my permanent and temporary employees," says Bongani.

NEW GYM GETS EMTHONJENI RESIDENTS MOVING

AS A BENEFICIARY OF TRAC'S ENTERPRISE DEVELOPMENT PROGRAMME, MILCAN GYMNASIUM WAS ABLE TO OPEN ITS DOORS AND ASSIST PEOPLE TO STAY FIT AND HEALTHY DESPITE COVID-19.



TRAC's enterprise development programme aims to assist start-up black-owned businesses in communities along the N4 Route to build a solid foundation so that their business becomes sustainable, creates employment and boosts South Africa's economy.

When Ndumiso Khumalo, from Emthonjeni in Machadodorp, approached TRAC to assist him to get his gym, Milcan, up and running during Covid- 19 we were excited to assist. Khumalo, who is passionate about bodybuilding, aerobics and v-box, and has had a longstanding relationship with TRAC, has participated in various bodybuilding competitions, including those hosted by the National Amateur Bodybuilders Association and the International Fitness and Bodybuilding Federation.

His aim for Milcan, which also offers aerobics and v-box classes, was to help his community to exercise and encourage people to have a healthy lifestyle.

TRAC jumped on board and assisted Khumalo with administration support to register Milcan as a business. We also sponsored the design and manufacturing of the gym's signage.

His greatest need to get the business off the ground, was all of the equipment gym-goers need to exercise. As such, TRAC sponsored a hamstring machine, leg press machine, cable crossover machine, chest machine, triceps machine, leg extension machine, biceps machine, two treadmills, four bicycles, three benches and a squat rack. We also sponsored a large variety of gym weights and dumbbell sets.

The gym continues to grow from strength to strength and currently has about 40 members. Furthermore, we continue to help and support Khumalo when he holds open days, assists local schools establish fitness programmes, or hosts an event.

"We are devoted to providing high customer satisfaction through our professional services and aim to set new trends in the gym and fitness centre industry," says Khumalo.

"Our gym is the ideal environment to tone, tighten, lose weight, gain weight, build strength and increase stamina, and our fully trained and qualified team provides advice and the support needed to achieve fantastic results at a very reasonable price," he adds.





EHC SET TO BOOST LOCAL ECONOMY

A COMMUNITY-LED INITIATIVE, SUPPORTED BY TRAC, AIMS TO BRING TOURISTS TO EMGWENYA.

The Emgwenya - Waterval Boven Heritage Museum and Tourism Centre (EHC) is committed to promoting tourism in and around Emgwenya, in the Emakhazeni Local Municipality, to support inclusive economic development.

The EHC, a community-led initiative launched to revitalise the town, is establishing a museum, tourism centre and café in Emgwenya to highlight the area's history and culture and promote local activities to revive the economy within the area.

Volunteers, interns and part-time employees are working together to start the centre, with financial support from TRAC.

The building, which was previously used by the Waterval Boven Reform Church, has been adopted by the EHC and is being renovated and upgraded.

To date, the floor has been sanded, prepared and varnished, the yard has been cleaned up and plants have been removed to create a parking area for staff. The previous church pulpit has been transformed into a museum information desk and electrical plugs have been installed in the building.

In addition, TRAC contributed towards the salaries of two part-time staff members, a janitor and gardener; and security costs. We also provided equipment to level the ground and erected a sponsorship board at the museum.

The EHC has also taken on three interns from the local TVET college to support its work. The interns focus on social media, fundraising, engaging taxi owners, establishing operating procedures for the EHC and facilitating community engagement. While the EHC worked on hiring a part-time janitor and part-time gardener,

apart-time contractor was hired to conduct work on the building. This assisted greatly and sped up the process.

With the long-term vision of making the ZASM Tunnel and Elands Valley Waterfall hike the most popular tourist destinations in the area, the EHC has been working with the Boven Reboot Initiative to conduct a clean-up of the area around the tunnel and the waterfall.

In addition, it has met with tourism monitors, supported by the Mpumalanga Department of Tourism and the Department of Safety and Security, to see how to better support these tourism ambassadors, and drafted and distributed information packs for them to give to tourists.

The EHC is also engaging with local taxi owners to transfer tourists from guesthouses to tourism activities in the area, thereby providing them with an extra income stream.

In addition, the EHC met with a possible partner for the café which is fully operational.





Community conversation a hit!

At the EHC's first Community Conversations event, the organisation partnered with the Boven Reboot Initiative to invite Siphwe Semelane, an architect, to present his thesis *Landscape, Lines and Lore: Waterval Boven as a case study for using heritage preservation for economic, ecological and social rejuvenation*.

Siphwe was an architecture student at the University of Pretoria and worked with Boven Reboot Initiative in 2018 on his thesis. However, he didn't have the opportunity to return to Emgwenya to present his findings.

Siphwe's presentation made a clear case for the value of heritage in revitalising a small town. He said that there are over 500 post-industrial small towns in South Africa that are struggling to create enough jobs to sustain their community. Unlike many other small towns, Emgwenya has a rich history and ecological assets – such as its stonewalled structures and beautiful natural landscape.

HELPING HAWKERS BECOME SELF-SUSTAINABLE

TRAC'S SUPPORT OF THREE INFORMAL TRADING SITES IS HELPING FRUIT SELLERS AND HAWKERS TO IMPROVE THEIR LIVELIHOODS AND BETTER THEIR LIVES.



As the concessionaire of the TRAC N4 Route, one of our goals is to facilitate the stimulation of trade and investment between South Africa and Mozambique. As such, we spent R6.5 million on upgrading infrastructure, training and mentoring and enriching hawkers' lives at three informal trading sites in Mpumalanga between 2018 and 2021.

The beneficiaries – the Vukutimele Informal Traders, Marula Fruit Sellers' Market and Tizameleni Bo-make Market – were also provided with non-monetary assistance, site cleaning, refuse collection, grass cutting and cattle control, among other things.

Vukutimele Informal Traders

From August 2019 to March 2022, TRAC worked on the Karino Interchange, transforming the previous intersection into a grade-separated interchange, with on- and off-ramps and a bridge that separates cross-traffic from through-traffic. The upgrade was geared to ease traffic flow and enhance road user safety at the extremely busy intersection.

During this time, the Vukutimele Informal Traders had to temporarily vacate the site. As they would not be able to work, TRAC ensured that they each received a monthly stipend and arranged training for them as part of an enterprise development programme. TRAC appointed the Lima Rural Development Foundation to implement the programme and ultimately stimulate local economic development in the area.

The Seta-accredited course taught the hawkers how to manage and grow their small businesses and consisted of various modules that they completed in 2020 and 2021. They worked very hard through the year and were jubilant to receive their course completion certificates at the graduation ceremony.

When presenting the certificates, Lungile Mkhwanazi of Lima proudly said: “The learners performed extraordinarily well and we are very pleased with their exceptional work ethic. We look forward to seeing their businesses grow.

There are currently 11 hawkers at the site.





Marula Fruit Sellers' Market

Hawkers from the Marula Fruit Sellers' Market also completed the TRAC-sponsored enterprise development programme run by Lima in 2020 and 2021.

TRAC's relationship with the informal fruit traders commenced in 2012 when TRAC joined forces with RCL Foods to build a fully equipped block of trading stalls for them in Nkomazi. Now called the Marula Fruit Sellers' Market, the stalls were officially opened at the end of 2012 and were initially occupied by 15 hawkers.

TRAC's successful partnership with RCL Foods over the years has blossomed and ensured that the

market prospers and that the hawkers have everything they need. Routine maintenance of the facility is also conducted.

In 2015, the partnership saw the opening of the Marula Plant Nursery and a vegetable garden, an extension of the Marula Fresh Produce Market. In 2018, major renovations took place at the market to further enhance the trading post's aesthetics and customer appeal, and to improve the traders' working conditions.

The upgrade included major repairs to the thatched roof, the building of pine benches, lockers and crates near the stalls, and paving of the customer seating area and the front of the facility.

TRAC also replaced and/or repainted dustbins, upgraded the automated irrigation system, replaced old signboards and repaired stoves. The toilets and storeroom were repainted, pest control treatment was applied, and the shade netting of the vegetable garden was replaced. The hawkers also received branded uniforms from TRAC.

According to the hawkers, the renovations and the entire project had a positive influence on their professional and personal lives.

“What TRAC and RCL Foods have done for us is amazing,” said Maureen Mkhonto, one of the hawkers. “My mom was one of the first hawkers to work here. After she passed away, I took over her stall. Working here helped me to support a four-person household and pay for a business management course for myself. I was also able to pay for driving lessons and was able to put my siblings through school.

“Being able to work at this market made me an entrepreneur in my own right. It allowed me to grow in more ways than one. Most importantly, it has allowed me to believe in my dream – becoming a successful entrepreneur,” she added.

There are currently 15 hawkers at the site.

Tizameleni Bo-make Market

In 2016, TRAC financed an upgrade of the Tizameleni Bo-make Market informal traders' site – situated in Matsulu – to increase the number of stalls to 32. The upgrade also included a thatched-domed information centre, bathroom facilities and two 5 000-litre JoJo tanks to supply water to the bathrooms.







ENVIRONMENT

A CHANCE TO HEAL ENSURES NEW LIFE

WITH AN ESTIMATED 20 000 RHINOS LEFT IN THE WILD IN AFRICA AND THE DEMAND FOR HORN GROWING, EXPERTS BELIEVE THAT THE WILD POPULATION COULD BE EXTINCT BY THE END OF THE DECADE. TRAC IS COMMITTED TO SUPPORTING INITIATIVES IN OUR COMMUNITY THAT ARE DOING THEIR UTMOST TO STOP THIS FROM HAPPENING.



There's nothing as precious as the gift of life. This is especially so when a life that's saved results in the birth of a new generation – a rhino calf that brought with her hope for the survival of an increasingly vulnerable species.

Her name is Blizzy and she is a miracle. She was the first rhino calf conceived and birthed naturally to parents who were both orphaned and in a rehabilitation centre as a result of poaching.

Blizzy is the offspring of Wyntir – who was left orphaned and vulnerable after poachers butchered her mother in 2014 – and Storm.

Shortly after the death of her mother, Wyntir suffered another terrible blow. She was brutally attacked by a cackle of hyena which left her hanging on by a thread.

This is when TRAC entered into a partnership with Mbombela-based Care for Wild (CFW), the largest orphan rhino sanctuary in the world. Since then, the partnership has continued to flourish.

When CFW approached TRAC's corporate social investment department for financial assistance to help save Wyntir, we immediately adopted her and entered into an annual agreement to support the registered non-profit sanctuary. The initial sponsorship covered Wyntir's most critical needs – medicine, food and housing.

Over the years, the sanctuary's dedication, knowledge and perseverance, backed by TRAC's annual sponsorship, ensured the gift of life for Wyntir and a new home in which she thrived.

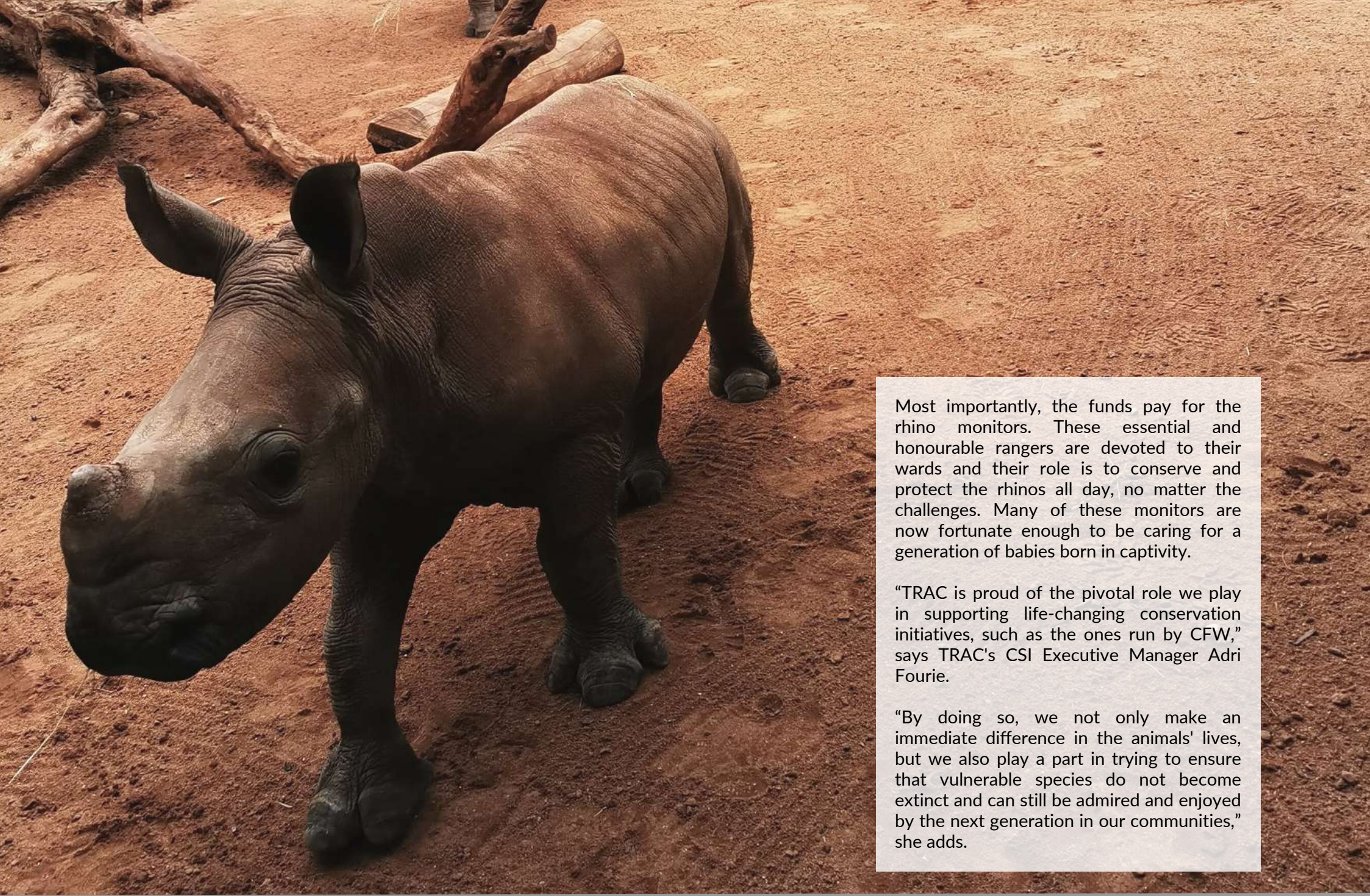
During her recovery, Wyntir befriended two other orphaned rhinos at the centre, Tana and Mabush. Both were also close to death when they were taken under CFW's wing and adopted by TRAC. Just like Wyntir, they too beat the odds. Over time, Wyntir, Tana and Mabush became inseparable.

Another calf is born

A few weeks after Blizzy's birth, Storm fathered another calf – River. While River is not one of our CFW adoptees, TRAC joyously celebrated his birth as he too was conceived and delivered naturally by rhinos who were not raised by their own mothers.

TRAC is privileged to have been able to help these rhinos and we continue to assist the sanctuary's anti-poaching units and rehabilitation programmes. Our monthly contribution goes towards supporting CFW's community conservation education and environmental protection programmes, ranger training and job sustainability initiatives.





Most importantly, the funds pay for the rhino monitors. These essential and honourable rangers are devoted to their wards and their role is to conserve and protect the rhinos all day, no matter the challenges. Many of these monitors are now fortunate enough to be caring for a generation of babies born in captivity.

“TRAC is proud of the pivotal role we play in supporting life-changing conservation initiatives, such as the ones run by CFW,” says TRAC’s CSI Executive Manager Adri Fourie.

“By doing so, we not only make an immediate difference in the animals’ lives, but we also play a part in trying to ensure that vulnerable species do not become extinct and can still be admired and enjoyed by the next generation in our communities,” she adds.



REDUCING IMPACTS ON WILDLIFE AND IMPROVING MOTORIST SAFETY

TRAC'S PARTNERSHIP WITH THE ENDANGERED WILDLIFE TRUST TO PROTECT WILDLIFE ALONG THE N4 ROUTE CONTINUES TO GROW.

TRAC joined forces with the Endangered Wildlife Trust (EWT) in 2017 to implement the EWT Wildlife and Roads Project to protect wildlife and road users along the N4.

The project is a database management system that keeps track of the number and type of wildlife killed or injured by vehicles on the N4 Route.

The N4 Route passes through landscapes that comprise patches of grasslands, freshwater ecosystems and wetlands, which attract numerous wildlife in the vicinity of the road. Increased animal activity on and adjacent to the highway often results in increased wildlife-vehicle collisions.

The initiative thus sees TRAC's patrol teams capturing roadkill information and sending it to the EWT, which updates the database daily. The data is used to develop a management strategy to reduce the number of animals involved in vehicle-wildlife collisions and to make recommendations to road engineers about animal-friendly road designs.

To ensure accuracy and authenticity, the EWT trained TRAC's patrol teams at the beginning of the partnership, in various areas, including data collection, species identification and snake handling.

The project's initial phase proved extremely successful, resulting in TRAC strengthening our ties with the EWT by sponsoring bursaries.

Cameras track wildlife

From data collected during the programme, several sections along the

route are emerging as roadkill hotspot areas, requiring further intervention measures to keep wildlife and road users safe. As such, the installation of cameras at existing underpasses and overpasses was proposed.

The camera trap idea came from an EWT learner, Thabo Hlatshwayo, who was awarded a bursary from TRAC.

Born in Mataffin in Mbombela, Mpumalanga, Thabo grew up in the rural village of Bhuga. In high school, Thabo's teachers encouraged him to become a teacher or nurse, but he knew in his heart that he wanted to contribute to nature.

His life changed when he attended a career guidance session organised by the Mpumalanga Department of Education. To his delight, he learnt that he could apply for an environmental science degree.



With funding from the National Student Financial Aid Scheme, Thabo enrolled at the University of Venda for a BSc in Environmental Science and qualified in 2015. A National Research Foundation Scholarship took him through his honours degree, which he obtained in 2016.

Due to a lack of funding, Thabo couldn't register for his master's degree and spent a year at home. He then took the only opportunity on offer, a Diploma in Agriculture at the University of Mpumalanga (UMP), which exposed him to young lecturers who motivated him to study further.

Determined to pursue his dream, Thabo developed an MSc research proposal while still studying at UMP. He sent it to the Department of Conservation Ecology and Entomology at Stellenbosch University, where it landed on Rhoda Malgas' desk, one of the department's lecturers.

Recognising Thabo's potential, she contacted him and offered to be his mentor. He also applied for a Green Matter Scholarship and was selected as a Green Matter/Mapula Trust Fellow in 2018 when he registered for his Master's in Conservation Ecology at the University of Venda.

"Obtaining the scholarship changed my life. I got an opportunity to work on an amphibian roadkill project in the Vhembe Biosphere

Reserve in Limpopo, in collaboration with the EWT," says Thabo. This is how Thabo met Wendy Collinson-Jonker, who was his MSc supervisor and mentor. She's now his manager. "Working with Wendy, I have developed in the field of road ecology, which explores the relationship between linear infrastructure development and nature," says Thabo.

After obtaining his master's degree, Thabo wanted to tackle his PhD and explore possible mitigation measures for reducing incidences of wildlife roadkill. But, as expected, securing funding for this much-needed project was a challenge, until TRAC stepped up to the plate.

Obtaining a bursary from TRAC was a milestone in my career development, says Thabo, who is now pursuing his doctoral studies at the University of KwaZulu-Natal.

PhD sheds light to ensure wildlife safety

Thabo's PhD – *Monitoring the impacts of the N4 Route on habitat use/movement by wildlife, Gauteng Province, South Africa* – is investigating existing road structures that were designed for stormwater drainage and human passage at the hotspots.

His thesis includes a camera trap project to broaden the understanding of whether animals can cross roads successfully using current road infrastructure. The camera traps provide a reliable approach to monitoring animal behaviour and their utilisation of road structures.

Three roadkill hotspots – the Bronkhorstspuit, Mbombela and Malelane sections – were prioritised for the project and a road structure investigation was conducted in September 2021.

Camera trap data obtained from the cameras between June and July 2022 indicate that there is animal activity beneath the road.

The results so far indicate that the project has the potential to make an impact by providing safe wildlife crossing corridors on the N4 Route!

"This research would not be possible without TRAC, which has invested in my career development." says Thabo



ENSURING CONSERVATION AND INFRASTRUCTURE DEVELOPMENT CAN CO-EXIST

CUSTODIANS OF SOUTH AFRICA'S ROADS NOT ONLY HAVE A DUTY TO ROAD USERS BUT ALSO TO THE ENVIRONMENTS THAT THEY TRANSVERSE.



A road has positive and negative influences on people and the environment. Positively, road infrastructure plays a critical role in South Africa's economy, enabling the transportation of goods and enabling people to reach their destination; while negatively, roads traverse land resources, form barriers to animals and may even have a harmful impact on natural resources.

To mitigate any negative environmental impact caused by any roadworks, TRAC ensures that our construction sites are compliant with international standards and that our daily operations include waste collection along the N4, plant relocation and site rehabilitation. In addition, we adhere to an external audit process which ensures that we comply with South Africa's environmental laws.

Our drive to preserve and protect the environment is evident in our day-to-day work and a 'green' element is essential in all of our community projects, whether this is the erection of solar panels to power our cameras, the JoJo tanks we donate to water-scarce community schools or the bio-digestors we have installed at staff facilities along the route.

Eco-friendly construction

Before construction commences, there are various environmental permits, licences and authorisations required to comply with local and international legislation. These include environmental authorisations, water use licences, protected plant removal permits and quarry and forestry permits. The permits are obtained from national and provincial authorities.

Rescuing protected plants

Searching for and rescuing protected plants forms part of our environmental responsibility to ensure the least amount of damage to ecosystems along the N4 Route before, during and after road construction projects.

Before a major construction project commences, environmental specialists are brought in to evaluate and identify protected plant species that will be affected in the vicinity. These plants are removed and planted in protected areas or on neighbouring farms. The removal and replanting of these species are done in conjunction with various authorities, such as the Mpumalanga Tourism and Parks Agency and the Department of Agriculture, Forestry and Fisheries, which provides the permits.



Relocation of the iconic mountain aloe

The large, single-stemmed Southern African Aloe Marlothii is a large, single-stemmed Southern African aloe growing up to six metres tall and can be found scattered throughout the Lowveld bushveld along mountainous areas, rocky terrain and slopes.

Protected by environmental legislation, it is illegal to remove these aloes without a transport permit issued by a provincial or other nature conservation authority and consent from the landowner.

The relocation of aloes – to accommodate the widening of the road or a borrow pit for construction material – is taken seriously and we have successfully relocated more than 500 Aloe Marlothii over the past two years.

Replanting trees along the N4

Post-construction rehabilitation requires the reinstatement of indigenous vegetation in disturbed areas and the road reserve. This is also a compliance aspect as it is required by the permits and licences that are issued by the authorities. Where it is not possible to plant trees within the road reserve, TRAC works with the forestry department to plant trees at various schools and community buildings.

We are currently in the planning phase to donate more trees to communities, via the programmes run by the forestry department.

Combatting alien vegetation

To combat alien plants effectively, TRAC partnered with the Lowveld Escarpment Fire Protection Association (LEFPA) to establish the alien invasive plant removal project.

The programme sees LEFPA's firefighting teams take care of the troublesome plants during the fire off-season in the Lowveld region (between eNtokozweni and Malalane). The initiative is funded by TRAC and LEFPA uses its own equipment, transportation and knowledge to ensure the road reserve and its surrounds remain alien plant free. To bolster LEFPA's teams, TRAC funded additional training for 90 crew members from Mbombela and Waterval Boven. Aquila Training presented two courses – an environmental awareness course, dealing with all the aspects of the work, home and natural environments; and a course on plant identification.

Annual assessments

TRAC conducts five studies annually to assess the water quality that is released and consumed, as well as identifying the areas where there are infestations of alien plants.

We also assess the causes of, and solutions to soil erosion and bare spots (truck stops or traffic, hitchhiking, etc.), traffic noise and its effect on surrounding communities, as well as evaluate the road reserve along the N4 Route in terms of roadside vegetation, which prevents soil erosion.

Preventing erosion is crucial when it comes to road safety. When a problem is identified, our road maintenance teams work the affected areas and replant them with indigenous grass and trees.

Providing self-sustainable spaces

In addition to TRAC's other greening initiatives, we provide building assistance to our communities to help provide self-sustainable spaces for public use such as the multi-purpose hall built at Thanda Primary in Mjejane.

In addition, in rural areas, where water is scarce, we provide rainwater catchment tanks for water provision and gas for cooking. This environmentally friendly solution alleviates community members' monthly water and electricity costs, and is recognised by the government's Green Economy drive.





ROAD CONSTRUCTION AND MAINTENANCE GO A LONG WAY WITH RECYCLED MATERIAL

TRAC REUSES ASPHALT THAT'S MILLED IN THE REHABILITATION AND UPGRADING OF ROADS AND ALSO CRUSHES DAMAGED CONCRETE BLOCKS FOR REUSE IN THE REHABILITATION OF THE N4 IN EMALAHLENI.

We also reuse reclaimed asphalt. During rehabilitation, asphalt layers are removed by milling and stockpiling separately. The removed material, referred to as reclaimed asphalt, is used to reconstruct gravel shoulders, construction of fill layers in roadworks, and for the construction of new asphalt bases.

All construction projects on the N4 allow for the reuse of between 20% to 40% of reclaimed asphalt in all new asphalt base mixes. Depending on the size and scope of the project, the amount of reclaimed asphalt used in the new asphalt base could be in the region of 10 000 tons per project.

Patching is completed by using 100% reclaimed asphalt material with a small percentage of cement and bitumen emulsion. The most recent patching was completed in eNtokozweni.

Recycling used concrete

Section 3, between Emalahleni and Middelburg, is the only stretch of concrete road on the N4 Route.

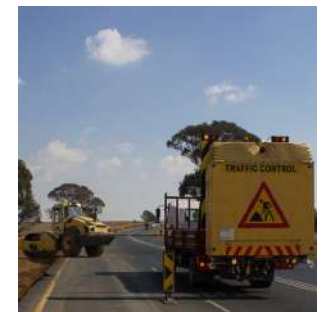
The section was upgraded and rehabilitated between 2019 and 2022, including the removal and replacement of the broken concrete road sections. An additional 8km of new passing lanes were also constructed.

A total of 12 500 cubic metres or 31 250 tons of concrete road sections

were removed. They were then crushed and stockpiled next to the N4.

The new passing lanes required the construction of a 250mm C3 subbase layer. Normally, C3 subbase layers for widenings are constructed using material from a borrow pit or a commercial quarry. In Section 3, the C3 subbase was constructed using a mix of 60% crushed concrete and 40% borrow pit material.

The project reused 7000 cubic metres of concrete for the construction of the C3 subbase for the widening. The remaining material is stockpiled in the gore area between the N4 and N12 and is allocated for future projects.



TRAC'S WAR ON WASTE

TRAC HAS VARIOUS INITIATIVES IN PLACE TO CURB ILLEGAL DUMPING, ENSURE THAT REFUSE IS COLLECTED AND TO PROTECT THE ENVIRONMENT ALONG THE N4.



The TRAC and Emalahleni Local Municipality (ELM) Waste Management Project partnership is the perfect example of how organisations are stronger when working together.

The partnership was launched when TRAC's cleaning team identified dumping hotspots on municipal land along the N4 and held a meeting with ELM's Environment and Land Waste Management Directorate. The impact of the waste on the N4 ensured that TRAC is committed to assisting with the clean-up in Highveld Bridge, Vosman and Schoongezicht.

While the municipality was cleaning up these areas, it was struggling to keep up with the volume of refuse being dumped, due to limited resources.

The solution was to implement a short-term structured Waste Collection Plan with community volunteers, which included educating the community about illegal dumping. TRAC provided two of our tipper sand truck and a tractor-loader-backhoe to assist in keeping the areas clean.

While much work still needs to be done and community education continues, we are excited that the war on waste on the N4 has kicked into gear.

Contractors curb waste

TRAC's small-, medium- and micro-sized maintenance contractors collect waste along the N4 route to ensure that the road and road reserve remain clean. This also ensures that we keep road users safe and do all we can to protect the ecosystems along the route. In addition, TRAC reuses old emulsion and paint drums and distributes them along the N4 and in towns that border the road to encourage people not to litter. These drums are transformed with bursts of colour and our road safety mascot, Joe, is painted on them, which helps to build our brand.







EDUCATION & SKILLS DEVELOPMENT

ADEL GRADUATES DESPITE THE ODDS

NOT EVEN A HORRIFIC ACCIDENT AND YEARS OF REHABILITATION COULD STOP A TRAC BURSARY RECIPIENT FROM OBTAINING HER UNIVERSITY DEGREE.



When Adel Cato came into TRAC's fold in 2018 she had one goal – to get ahead in life by studying industrial psychology.

When applying for a TRAC bursary to pursue her dreams, her bubbly personality, strong determination and God-given talents stood head and shoulders above the other candidates and she was awarded a bursary in collaboration with the University of Pretoria.

A few months later, tragedy struck. Adel was hit by a car when crossing a road near the University of Pretoria and was left fighting for her life at Muelmed Hospital, where she was in a coma for three months.

The accident affected Adel so severely that her left side was completely paralysed. She also suffered spasms on her right side and had to relearn basic bodily functions. At the time, it was impossible to imagine that one day she would be walking across the university's stage to receive her degree!

“The universe always has a better plan and we simply have to trust and believe in it,” says Adel.

How right she was! With ongoing support from her family, the university and TRAC, Adel realised her university degree dream.

The road to recovery was not easy. Besides having to learn how to do basic things from scratch, she also had to put her studies on hold while undergoing extensive rehabilitation. But, less than two years after the accident, Adel was living a normal life.

Being back in class was not plain sailing. Despite her peers and the faculty being very welcoming

and accommodating, Adel's situation forced her to adapt to a new way of studying. Not only did she have to decrease the number of subjects she took per semester, but she found she took longer to study.

Not one to shy away from a challenge (her recovery is testimony to this) and determined to finish what she started, Adel took the bull by the horns and persevered.

“I won't lie, after the accident this degree looked like a big mountain before me and I often doubted my ability to complete it. But then I would get an exam or assignment back and could see God's hand in my marks. I knew this was the path I was meant to be on,” says Adel.

She not only worked hard in the classroom but also got an internship at TRAC's Head Office, which provided her with practical experience as part of the bursary package.

“I was very nervous on my first day, but when I saw the welcoming smiles and received endless support from my peers I knew everything was going to be ok. Working at TRAC has been one of the most amazing experiences of my life,” says Adel.



And, at the end of 2022, all of her dedication and hard work paid off and she completed her final year.

TRAC's Human Resources and CSI Executive Manager Adri Fourie, is very proud of Adel. "This woman's tenacity in the past five years has been remarkable and I have learned a lot from her. When I saw her in her hospital bed in 2018, I didn't dare imagine that she would one day work in an office next to mine. It was just not possible to imagine this, given the condition the accident left her in. Boy, did she prove us all wrong!"

Adel is excited about the future and will continue to trust God in all her endeavours.

DEVELOPING SKILLS THROUGH LEARNERSHIPS AND BURSARIES

EDUCATION IS A POWERFUL TOOL FOR UPLIFTMENT AND CHANGE AND IS THUS ONE OF TRAC'S KEY CORPORATE SOCIAL INVESTMENT PRIORITIES.



A tertiary qualification, while not possible for many due to financial constraints, has the ability to change lives and livelihoods by boosting individuals, communities and the economy too.

This is why TRAC believes in the power of learnerships and facilitating on-the-job learning.

Managed by sector education and training authorities (SETAs), a learnership is a work-based learning programme that enables students to obtain a National Qualifications Framework (NQF) registered qualification. As part of the qualification, the student gains the necessary skills and workplace experience, through on-the-job training, that can lead to better employment or self-employment opportunities.

An advantage for students is that they also receive a stipend while they complete the practical side of their qualification. This enables them to earn a small income to cover any costs while working towards securing a job or opening their own business.

In 2021, TRAC enabled 20 disabled learners to complete a learnership in business practice and, in 2022, 10 of these learners went on to start a

learnership in hygiene and cleaning.

The business practice learnership programme enables students to obtain a General Education and Training Certificate (GETC): Business Practice Level 1 qualification. It's an ideal qualification for anyone preparing for employment or self-employment in any business.

The qualification's fundamental component enables learners to communicate and work with figures in a business environment, while the core component offers empowerment in the areas of technology, life orientation, human and social sciences (customer service), economics and management (entrepreneurship), as well as cognition theory and practice.

A student who obtains this qualification will have gained the knowledge and ability to use fundamental skills in a business environment, make appropriate use of information and communications technology in an office setting, and incorporate a range of life skills in an employment or self-employment situation.

Success stories

County Mathebula started his journey with TRAC

in 2019, with a bursary for a National Certificate NQF 3 End User Computing. The bursary covered the cost of the course and a monthly allowance for textbooks, travel and expenses.

Between 2021 and 2022, County completed his business practice learnership at LNMR, a farming and agriculture business.

"I'm grateful to my facilitator and TRAC for giving me the opportunity to learn about business practice. I've learnt a lot and now know and understand the day-to-day running of a business," says County.

"I wasn't afraid to start from scratch because I was so eager to learn. I was also taught in a very calm manner which put me at ease. My supervisors were extremely happy with the effort I put in and, when my practical training ended, the company asked me to continue helping so that I could gain more experience and knowledge. I have learnt so much that I could now open my own business," he adds.

County is also completing the hygiene and cleaning learnership programme.

Keeping clever students in class

TRAC has entered into an agreement with the University of Pretoria to contribute an amount annually to the TUKS Trans African Concessions Bursary Scheme.

Through a set policy and criteria, the university

selects previously disadvantaged youth who are already studying and excelling, but are at risk of not finishing their qualification due to financial constraints.

Through the grant, over the past two years, TRAC has assisted several students to achieve their goals and we are proud of them. To date, four students have gone into the world of work as a radiologist, engineer, veterinarian and human resources manager.

Health and safety officer in the making

TRAC is proud to have been able to support Nonthando Mahlangu for two years, while she obtained her Skills Certificate for Health and Safety, through Oxbridge Academy.

"I'm very grateful for the opportunity given to me by TRAC to further my studies. I don't think I could've done it on my own, in such a short period of time," says Nonthando.

"I'm still busy with my Occupational Health and Safety Practitioner course. It's challenging, but I'm coping," she adds.

Nonthando says working in safety will enable her to look after people, which is one of the things she loves to do. She recently submitted her last practical assessment and is awaiting the results.

Addressing scarce and critical skills

Sol-Tech focuses on vocational, critical and scarce skill training, which assists students to get

a nationally recognised qualification that often serves as a foundation for further study and ultimately a recognised artisan qualification. Students who study at Sol-Tech are able to realise their dreams to develop their careers through goal-specific training.

TRAC annually awards a bursary for Sol-Tech to a young person who is unable to study due to financial constraints. The recipient is then also able to qualify for an apprenticeship at TRAC.





SUCCESSFUL E-LEARNING PROGRAMME CHANGES LIVES

TRAC HAS INVESTED OVER R3.5 MILLION, IN THE PAST TWO YEARS ALONE, TO ASSIST LEARNERS TO IMPROVE THEIR MATHS AND SCIENCE MARKS VIA AN ONLINE LEARNING PROGRAMME.

TRAC, in partnership with the Ligbron e-Learning System (LES), has made a significant difference in many youngsters' lives over the past seven years, through a distance-learning project that has enabled them to improve their matric maths and science marks to the point that they were able to gain university entrance. Teachers also benefit through the programme with assistance to reach more pupils and to keep up with a tight curriculum annually.

TRAC partnered with Ligbron in 2015. At the time, 40 learners from communities along the N4 Route were part of the programme.

Today, TRAC supports nine schools, with 13 maths and 10 science classes, assisting 7 000 learners from grades 8 to 12 and ensures teacher development.

The LES connects teachers and learners, from rural and mostly under-performing schools, training centres and boardrooms - using laptops, desktops, interactive whiteboards, desktop sharing and audio/video streaming - to a classroom at Ligbron High School, in Ermelo, where an educator can teach a class and several remote classes at the same time.

The programme runs every Tuesday and Thursday morning and afternoon, to accommodate all schools. Remote maths and science teachers simply log into the LES, at a prescribed time, and join the interactive lesson with their learners via a smartboard and two-way camera - much like Skype or Facetime.

The TRAC-sponsored schools are Phumelela Secondary School, Mphanama School and Middelburg Combined School, all in Middelburg; Wozanibone School and Dan Kutumela Secondary School (Bronkhorstspuit); Khayalami Secondary School (Belfast); Suikerland Secondary School (Malalane); Komati Akademie (Komatipoort); and Siyifunile Secondary School (Dullstroom).

Progress despite Covid-19

While the Covid-19 national lockdown caused major education challenges, it didn't deter Ligbron from continuing to assist learners.

The institution continued to offer lessons to matriculants on various platforms, such as YouTube, and on TV. It also created a cellphone application for matrics, focussing on quality educational maths and science material for Grades 11 and 12.



Suikerland Secondary School, one of the TRAC schools, made full use of technology during this time.

One of the school's educators, Thokozani Mthewthwa, teaches maths and life sciences to grades 10, 11 and 12. He has been a liaison educator for the University of the Witwatersrand Targeting Talent programme since 2007 and is a liaison teacher for the TRAC-sponsored e-Learning programme at the school.

He says teaching at Suikerland has been an amazing and challenging journey. "I have been able to teach learners and other educators to use e-learning equipment. Its benefits are obvious, and the end results are amazing. This is evident in the school's overall performance."

Mthewthwa says the biggest challenge during lockdown was lost teaching time, which put additional pressure on learners and teachers. His solution was to teach his learners online, using the Ligbron cellphone app and WhatsApp, so that they could reach their potential despite the pandemic.

Making a difference - Mpume Diale

Mpume always dreamt of going to university but always feared she wouldn't be able to, given her impoverished background. But that changed when TRAC brought the e-Learning programme to her school, Wozanibone.

Mpume says that from the moment the system was introduced at the school, her doubts about tertiary education evaporated, and her Maths and Science marks improved significantly.

"I have always attended Farm schools. Studying is hard when a person grows up like I did, with no electricity or access to online information. The only source of information I had was that provided to me by my teachers during class and the textbooks that we received from school." says Mpume.

She adds, "Although I have always been a top learner – matriculating with six distinctions – having access to the Ligbron e-Learning changed things for me. The smartboards installed in our classrooms were a big help. The system also enabled me to access saved videos that I would watch during breaks, especially on days our teachers were absent. Learning for me became much easier and a lot more fun, and to this day, I state that e-Learning helped get me where I am today!"

"I am now studying Medicine at the Sefako Makgatho Health Science University. I am grateful to my teachers, TRAC and the Ligbron e-Learning system for the assistance. It transformed my future and my life."



LEARNING LIFE SKILLS THROUGH PLAY

AS ONE DEATH ON THE ROAD IS TOO MANY, HELPING CHILDREN TO UNDERSTAND THE IMPORTANCE OF ROAD SAFETY IS ONE OF TRAC'S TOP PRIORITIES



While many fond childhood memories, filled with fun and laughter, can be made on a playground, not all children are lucky enough to experience this wonder.

TRAC made sure this wasn't the case for children at Machado Primary School, whose faces lit up in sheer delight when they saw their newly revamped and colourful playground in August 2022.

Complete with a road safety track, wire cars and tactile and sensory activities, the playground offers tons of fun, new adventures and another reason for the school's foundation phase learners to look forward to going to school.

"Their happiness at play warms our hearts, but it's the far-reaching benefits of the new playground that make us proud," says Adri Fourie, TRAC's Executive Manager of CSI

As the concessionaire of the N4 Route, one of our main priorities is the safety of road users, including pedestrians, and playgrounds – especially ones that have their own road safety track – can help children to develop, practise and remember these essential life skills.

Playgrounds also help children to develop the crucial cognitive, physical, social and emotional skills needed to become well-rounded adults, while exercise improves their health and well-being and the safe environment encourages independence.

"By teaching children the importance of road safety in such a fun and interactive way, they're bound to go home and share what they've learnt with others. This helps us to reach even more of our community members and keep them safe on the road," says Mrs Fourie.



Mekhosonke

Isago

Mpilo

Buhle

Sondivana

Megan

Simple
Nwazi mylo

Hiompho

njobulo

TRAC

Sankaliso
Meebo M

Yandisa

Sicelo

Ronald

Sandisile



Azande

Wrika

Mazwi

Jurid

Thando

Asma

onkarebile

Mpilo M

Xoliswa

Ryan

Luthago

Uncobile

Yamkkelani

HoPewell

Vanessa

Lemuel

MASTERING READING FOR MEANING

AN EIGHT-YEAR PARTNERSHIP BETWEEN TRAC AND PENREACH IS MAKING GREAT STRIDES IN IMPROVING LITERACY AND NUMERACY SKILLS AMONG FOUNDATION PHASE LEARNERS



By the age of three, many children from low-income families have heard on average 30 million fewer words than their more affluent peers! This has a significant impact on their ability to master basic literacy skills before they start school.

Furthermore, it also sets them up for greater challenges down the line. In the first three years of primary school, 70% of South African children are taught in their home language, but from Grade 4, the majority of learners are taught in English. Yet, children who have not mastered reading for meaning

in their first language, will find it harder to transition to English than those who have better home language literacy skills.

As a result, it's even harder for them to read for meaning or comprehend the curriculum. In a bid to rapidly improve these learners' education outcomes, TRAC partnered with Penreach in 2015 to bring the Asifundze Literacy and Numeracy Programme, Penreach Courageous Leadership Development Programme (PCLDP) and reading camps to schools and communities along our route.

Penreach is the largest non-governmental organisation (NGO) in the southern hemisphere focusing on education interventions, from early childhood to matric, for learners, teachers and school leadership. Self-funded, the NGO relies on social investment partnerships to reach its beneficiaries.

The dedicated literacy and numeracy development programme targets schools, learners, homes, community reading initiatives and relevant systems within partner schools and districts.

Eight schools under TRAC's wing

The TRAC/Penreach partnership, which was

launched at Kaapmuiden Primary School eight years ago, has continued to evolve. TRAC now funds the programme in several primary schools, namely Kaapmuiden, Sukhumani, Funindlela, Thanda and Tzandzanani, to name a few.

In 2022, 2 888 children, 57 teachers, eight principals and 10 heads of department were benefiting from the programme, which includes school leadership development, via the PCLDP, community reading camps, reading corners, toy libraries and teacher development workshops. The reading camps have proven very successful in after-school academic support, and keep children off the streets after school. Currently, 450 children attend the camps, and 55 volunteers assist.

In 2021, Penreach initiated a Reading Camp Rapid Activation project to make maximum use of reading camps while children couldn't attend school daily due to Covid-19.

Thirty interns from the government's Youth Employment Service (YES) were redeployed to 25 communities, including nine of which are under the TRAC programme, where they received monthly training to assist volunteers with literacy and numeracy activities and collect weekly data.



Photos by Hennie Homann

As a result, the children were not only attending reading camps after school as was the case pre-Covid-19 but also on days and at times when they didn't have formal schooling.

The YES interns seconded to the Penreach-TRAC partnership areas also helped to upskill volunteers and conducted literacy, numeracy and enrichment activities through sport and music. The project boosted the reading camps' activities, motivated dejected volunteers and provided the interns with insight into community development initiatives. As a result, some of the interns are now considering education as a career. The project was so successful it is continuing in 2023.

Capacitating school leadership

A key focus of the PCLDP is to give learners a better start in life, by capacitating school leadership to effectively track and manage curriculum implementation, and by monitoring teacher and learner attendance to reduce drop-out and repetition rates and improve learner performance.

Keeping up with the times, teachers now use tablets to track curriculum implementation and conduct learner assessments. The programme has made significant strides in improving Grade 3 learners' marks, with a high percentage of them now scoring above 50% in their home language, English and numeracy skills.

FLAGSHIP PROJECT AN ANCHOR OF EDUCATION IN NKOMAZI

TRAC WENT ALL OUT TO INVEST IN EDUCATION AND DEVELOPMENT AT THANDA PRIMARY SCHOOL TO ENSURE A BRIGHTER FUTURE FOR ITS LEARNERS AND THE SURROUNDING COMMUNITY IN NKOMAZI.



TRAC's R6-million, multi-phase, three-year infrastructure development project, which has equipped Thanda Primary School with essential facilities, is a shining example of how we are committed to bettering lives and livelihoods in communities along the N4 Route.

TRAC has transformed the rural, non-fee-paying, English medium school – situated on the outskirts of Hectorspruit less than a kilometre from the N4 – to create an environment that's more conducive to quality education for its approximate 800 learners in grades R to 9.

What started as a small request to TRAC for assistance from the school's principal in 2017 fast became a flagship project.

During roadworks in the area, the school approached TRAC's Komatipoort Load Control Centre for assistance to build an assembly hall. However, in a meeting with the principal to discuss the build, it soon became evident that the school had other pressing needs, including additional classrooms, ablution facilities, water

and a kitchen.

After discussing the school's needs with the Department of Education and obtaining approval, TRAC was all hands on deck to finance the building of these facilities, while ensuring job creation, enterprise development and skills development in the local community.

A four-phase project

Phase 1 of the project, launched in February 2018, saw the construction of an ablution block with 12 toilets in the female ablution and six toilets and eight urinals in the male section. As access to water is scarce in the area, TRAC also ensured that enviro toilets were installed and each block was fitted with a JoJo tank.

Phase 2 ensured the construction of the Foundation Phase block, complete with its own bathroom facilities and a road-safety-themed playground; and another classroom block, with two classrooms. Each block has a JoJo tank.

In Phase 3, an eco-friendly, self-sustainable kitchen and seating area (hall) were built,



providing the children with a comfortable, restful area in which to eat their daily meal provided by the government's National School Nutrition Programme. The kitchen also has ample space for the programme's volunteer food handlers to prepare, cook and serve meals. In addition, the hall provides comfortable seating for assembly or additional space for classes, and can even be rented to community members who need a function venue.

The final phase of the project consisted of the building of an additional three classroom blocks, consisting of two classrooms each. Each of these blocks also has its own JoJo tank.

Although the initiative was funded by TRAC, other key role players, including Earth Switch Architects, which designed the facilities, and Laduma Construction, which built them, ensured that extensive planning and creativity went into each phase's design to ensure state-of-the-art facilities.

The classrooms, for example, were designed and built to stay cool in the brutal heat often experienced in the area.

Developing numeracy and literacy skills

Besides ensuring infrastructure development, TRAC also finances the school's Asifundze Literacy and Numeracy Programme that's run by Penreach.

The early learning programme was launched at the school in 2018 to help the learners develop

their literacy and numeracy skills. It includes early childhood development initiatives, a toy library for Foundation Phase learners, and learner and community access to 24 reading camps.

Ensuring development through sport

The school needed a dedicated area in which learners and community members could train and play sports, most specifically netball, which is popular in the area. TRAC thus built an A-grade netball court at the school, in support of its sports development programme. The court is built to national standards and is an asset to the region of Nkomazi.

School headmistress Dr Sibongile Msibi says the students and the community love the new court and are looking forward to playing against other teams. She even challenged TRAC to a game or two!

Impacting the community

TRAC's all-inclusive support of the school has had a profound effect on the community and resulted in the growth and development of the people living in the Nkomazi area, with a focus on education, skills development and enterprise development, and sports development which includes the support of two netball teams and six soccer teams.

The community hall/kitchen serves as a central meeting site for Department of Education, Penreach outreach programmes and many other income-generating functions.

The building contract has employed the local community, consisting of skilled and unskilled labour, who have learnt building skills throughout the project by recently paving the school grounds to prevent damage from water runoff.

From a TRAC point of view

Thanda Primary School has an incredibly special place in our hearts. In 2017, we were approached to assist the school with something small, but when we saw how much was needed, we decided to give it our all. It was always our biggest wish to leave one of our most prominent communities along the route with the gift of education. We take immense pride in the knowledge that this has now been achieved in Nkomazi.

Education is crucial to the prosperity of our nation because without it there is no hope for future generations. That's why we at TRAC consider education as one of our most important corporate social investment portfolios.

We are grateful that the Mpumalanga Department of Education entrusted us to serve the Nkomazi community in this manner. We were also delighted to hear of the provincial government's commitment to continue looking after this institution to ensure it never goes without again.





SPORT AND CULTURE

PADDLING TOWARDS A DECADE ON THE CROCODILE RIVER

THE ADRENALINE-FUELLING CROCODILE RIVER KEEPS PADDLERS COMING BACK FOR MORE ACTION IN THE ANNUAL CROC CANOE MARATHON.



When paddlers take to the Crocodile River for the 2023 Croc Canoe Marathon, TRAC and the Lowveld Canoe Club will celebrate a 10-year partnership that has not only kept the race afloat, but also assisted previously disadvantaged sportsmen to hone their skills on the water since 2018.

The TRAC Canoe Marathon is an exciting two-day, 33 km annual race that sees veteran and novice paddlers travelling to Mbombela to take on a thrilling combination of technically demanding rapids and weirs.

In 2021 alone, the race benefited from a combined public relations and corporate social investment sponsorship of R42 000 from TRAC, as part of our commitment to uplifting the people and communities along the 570km N4 Route, along which the Crocodile River runs. While TRAC has supported the marathon since 2013 and is now the title sponsor, we have also been assisting developing paddlers from the Soweto Canoe and Recreation Club (SCARC) since 2018.

The SCARC, a youth development initiative, was founded in 2003 by ADreach Group CEO Brad Fisher, himself an avid paddler. The club, which has produced some of the most exciting up-and-coming paddlers in the country, aims to teach meaningful development skills to the youth, assist them with their studies and personal growth and ensure proper nutrition through a feeding scheme. Canoeing is used as the conduit to help them develop as individuals and teach them the importance of teamwork.

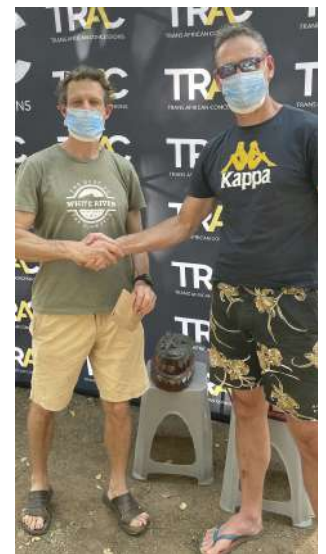
TRAC's sponsorship of some of SCARC's members covers their travel, accommodation, food, and entry fees into the marathon.

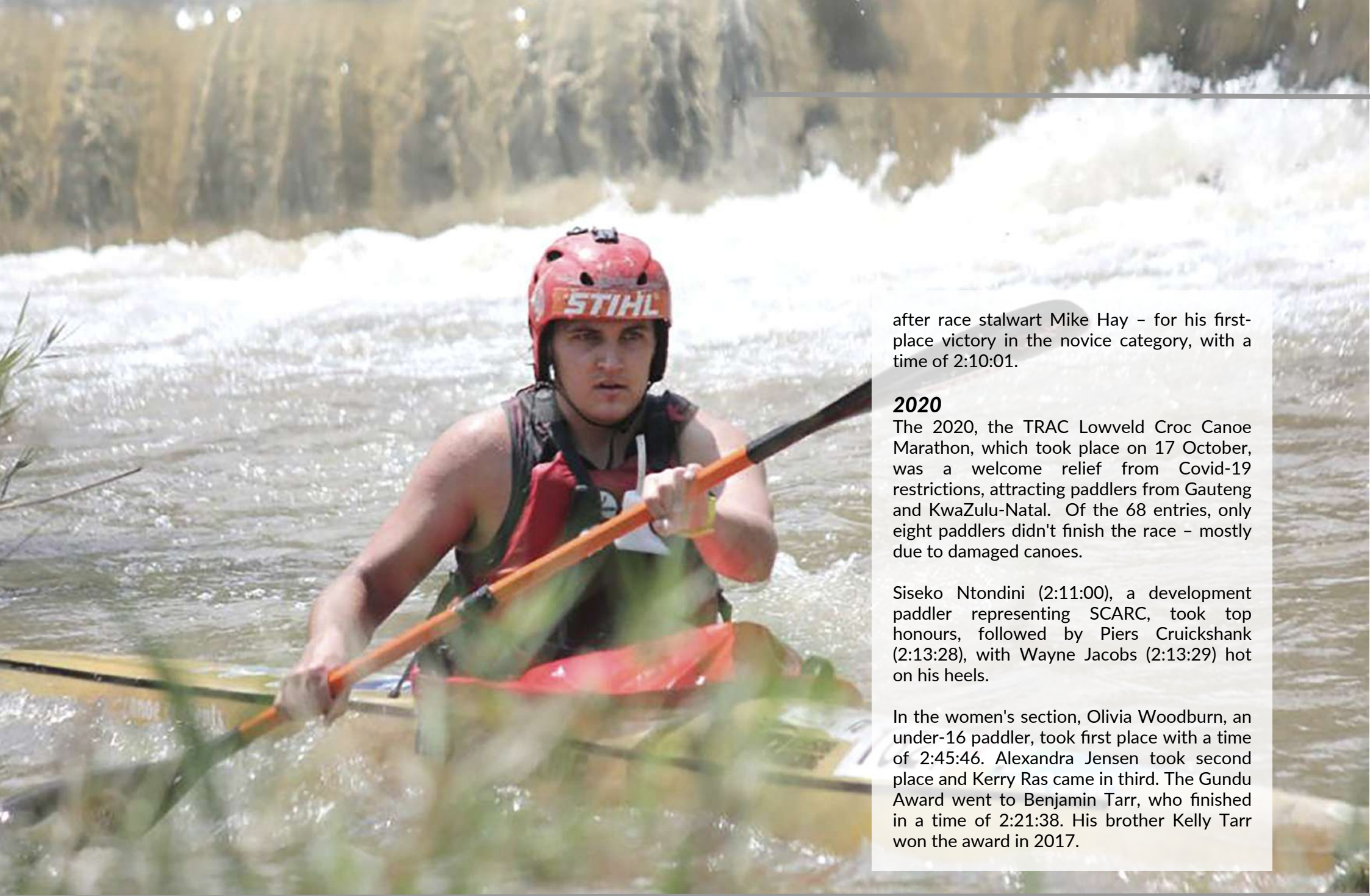
2021

In October 2021, 60 paddlers converged below the Kwena Dam wall in Schoemanskloof to find an increased water release, due to the heat, with water flowing at 7.5 cumec – it was clean, cold, and fast! The top 10 seeded paddlers started one minute apart, with the rest starting in 30 second intervals.

Former marathon world champion Wayne Jacobs took top honours, with a time of 1:59:37. It was his first victory after many years featuring in the top 10. Carl Folscher from KwaZulu-Natal came in second, with a time of 2:00:21; while 2020 winner Siseko Ntodini (SCARC) took third place (2:02:15).

Jeremy Maher from KwaZulu- Natal was honoured with the Gundu Award – awarded to the first novice and named





after race stalwart Mike Hay – for his first-place victory in the novice category, with a time of 2:10:01.

2020

The 2020, the TRAC Lowveld Croc Canoe Marathon, which took place on 17 October, was a welcome relief from Covid-19 restrictions, attracting paddlers from Gauteng and KwaZulu-Natal. Of the 68 entries, only eight paddlers didn't finish the race – mostly due to damaged canoes.

Siseko Ntondini (2:11:00), a development paddler representing SCARC, took top honours, followed by Piers Cruickshank (2:13:28), with Wayne Jacobs (2:13:29) hot on his heels.

In the women's section, Olivia Woodburn, an under-16 paddler, took first place with a time of 2:45:46. Alexandra Jensen took second place and Kerry Ras came in third. The Gundu Award went to Benjamin Tarr, who finished in a time of 2:21:38. His brother Kelly Tarr won the award in 2017.

TRAC BRINGS ELANDS MARATHON BACK

THE FIRST ELANDS MARATHON TO BE HELD IN 12 YEARS WAS A ROARING SUCCESS THANKS TO TRAC AND THE NEDBANK LVCC RUNNING CLUB.



It was with great excitement that we sponsored the 2022 TRACN4 Elands Marathon, in which over 1 600 runners took on the majestic Elands Valley on 7 May 2022. Backed by TRAC and organised by the Nedbank Running Club, 1 199 competitors completed the 42.2km race, with the oldest being 80 years old.

Previously known as the Elands Valley Marathon, it was last run in 2010 and came to an abrupt halt when the previous sponsor pulled out due to financial constraints. Given that the majority of the race is run on the N4 – between Emgwenya (Waterval Boven) and Ngodwana – TRAC welcomed the opportunity to sponsor the marathon when we were approached to do so by Nedbank LVCC.

qualifier and also a down run, attracted some of SA's top runners. Starting at Laerskool Oosterlijn in Emgwenya, the route took runners down the escarpment, through the Waterval Boven tunnel, to the finish line at the Sappi Skills Training Centre in Ngodwana.

The various water points were a welcome refuelling point for the runners. The Lowvelder team, which manned and sponsored the 10th water point, won the award for the best one of the day.

Two other road races – a half marathon (21.1 kilometres) and a 10 km race – also took place during the event, attracting top-class athletes and road running enthusiasts.



“As a local, fully-inclusive event that promotes one of South Africa's most popular sports, sponsoring the marathon was an ideal corporate social investment project for TRAC to back,” says TRAC's CEO Alex van Niekerk. “The marathon goes hand-in-hand with our commitment to the communities living along the N4, of which we are the concessionaire, as it also boosts tourism and the local economy,” he adds.

The marathon is backed by Comrades legend Bruce Fordyce, who has run it three times. He officially endorsed the 2022 TRAC N4 Elands Marathon during a Comrades preparation talk when he launched his new book, *Winged Messenger-Running Your First Comrades Marathon*.

Speaking to a large audience at the Nedbank LVCC Running Club, the nine-times Comrades winner said the marathon has always been a top

The race, known as the most scenic Comrades'

Comrades qualifier, albeit tricky due to its challenging downhill profile. "Running it sensibly is the key to success," he said.

"I have no doubt you will fall in love with the TRACN4 Elands Marathon and guarantee that you will want to do it again and again after running it once. It's much like the Comrades, once the 'bug bites, you're hooked,'" he said.



The 2022 TRACN4 Elands Marathon results were:

Distance: 42.2km

SENIOR MEN

POSITION	NAME	CLUB	TIME
1	Rufus Phote	Murray Roberts	2.19.12
2	Given Baloyi	Carlton AC	2.22.46
3	Gordon Lesatedi	Hot	2.29.32

SENIOR WOMEN

POSITION	NAME	CLUB	TIME
1	Chaké Bosman	Murray Roberts	2.48.11
2	Catherine Malungae	Hot	2.55.32
3	Yolandi MacLean	Hot	2.58.24

Distance: 21.1km

SENIOR MEN

POSITION	NAME	CLUB	TIME
1	Sibonginkosi Maseko	Ngodwana	1.05.14
2	Prince Ndlovu	Bellas AC	1.05.42
3	Sifiso Ngcobo	City of Mbombela	1.07.51

SENIOR WOMEN

POSITION	NAME	CLUB	TIME
1	Nomvula Sithole	LowMed	1.29.33
2	Renatha Botha	Run Walk For Life	1.39.42
3	Shani Roets	Temp	1.40.17

Distance: 10km

SENIOR MEN

POSITION	NAME	CLUB	TIME
1	Ebednico Mashaba	Bellas AC	32.00
2	Thulani Lukhuleni	City of Mbombela	32.38
3	Hanko Cronje	Middelburg MK	34.30

SENIOR WOMEN

POSITION	NAME	CLUB	TIME
1	Chantal Middel-Bovee	Definition AC	42.12
2	Nicole Blount	Mega AC	45.32
3	Angelique Rossouw	Temp	51.00



TRAC AND INNIBOS: 16 YEARS IN THE MAKING

WHILE TRAC HAS DIVERSIFIED ITS SUPPORT OF INNIBOS' INITIATIVES OVER THE YEARS, OUR AIM HAS ALWAYS BEEN THE SAME – TO SUPPORT, HELP AND UPLIFT OUR PEOPLE AND COMMUNITIES.



One of the heart-touching spinoffs of the Innibos National Arts Festival, which boosts Mbombela's economy every year, is the difference it is making in children's lives through the Innibos Meridian Karino Educational Trust of which TRAC has been a proud supporter since 2019.

The Trust helps artistically talented, less privileged high school learners by providing them with a bursary for Curro Meridian Karino, or another reputable school. In line with one of our six core corporate social investment portfolios, TRAC has funded bursaries for two learners – Jetro Nkuna and Laura Cossa.



Jetro was selected as the head of boarding and a student leader for the 2023 academic year. "I am super proud of him! His kind heart and caring nature, his love for people, respect and helpfulness set him apart," says Melody Tomlinson from Partners For Possibility, a non-profit, internationally recognised, leadership development and education programme.

Zwelithini Mxhego, Jetro's tutor, agrees. "He is very committed to his school work. So much so, that he even joined the school's chess club to

improve his analysis, strategising, and problem-solving skills. His motivation and determination will bear him great fruits."

Laura, now in Grade 11, is also doing extremely well and loving her lessons. "She demonstrates a strong will to learn and improve," says Mxhego.

TRAC gets on the bus with Innibos

As TRAC is the concessionaire of the N4 Route, which over 60% of the Innibos National Arts Festival's visitors use to travel to Mbombela, we have been supporting the festival for 16 years.

In sync with ensuring road safety on the N4, TRAC took over the festival's shuttle service – the Bossewaens-in 2006. Festival patrons use these to travel between the festival's grounds and various theatre productions in Mbombela.

While the Bossewaens were initially open game-viewing vehicles, local transport companies were contracted in 2018 due to Innibos' ever-increasing popularity. This boosted road safety around the festival grounds and also ensured additional job creation.

South Africans can't half-craft!

Our successful partnership with Innibos over the years also resulted in TRAC sponsoring the Innibos National Craft Awards in 2019. The awards, which are open to professional and emerging crafters, encourage and stimulate creativity and innovation in the craft sector.

"TRAC's support of all of Innibos' initiatives is geared to change lives for the better," says Adri Fourie, TRAC's CSI executive manager. "We are proud to have been able to make a difference by joining hands with our road users and the communities along our route."

'This Makes Me Happy'

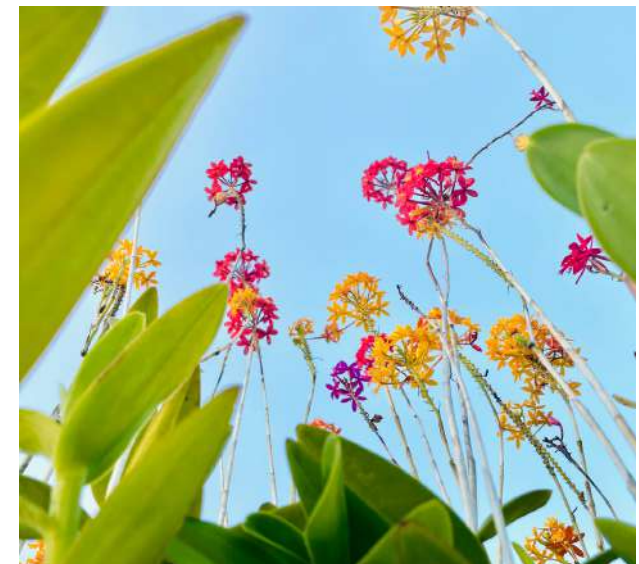
With so much negativity in the world today, it was great to support an initiative that encourages people to find what makes them happy.

With no Bossewaens needed in 2022, the Innibos organisers launched the Innibos TRAC Cellphone Photo Competition, which was presented by Innibos and hosted by i'langa Mall in Mbombela.

TRAC was the title sponsor of the contest, which called on the public to submit cellphone photos under the theme 'This Makes Me Happy'. The first prize of R10 000 and a Samsung A53, sponsored by Vodacom i'langa Mall, was awarded to Andile Nkambule for his photo which depicts how much he enjoys ice cream.

The second prize was awarded to Nicola Mason for her photo of an orchid etched against the sky; while the third-place winner was Evarné Potgieter, whose photo captured her children admiring a double rainbow.

Vodacom i'langa Mall also chose a photo that best depicted the theme 'Further Together'. Evarné also won this prize and a Samsung A53.



DULLSTROOM REVVED BY THE NATIONAL RALLY

THE TRACN4 NATIONAL RALLY HAS GROWN FROM STRENGTH TO STRENGTH SINCE TRAC'S SPONSORSHIP OF THE NATIONAL RALLY CHAMPIONSHIP COMMENCED IN 2019.



TRAC went all out for the 2022 TRACN4 National Rally, which was held in Dullstroom in Mpumalanga during November.

As diversity is an integral aspect of a thriving world, TRAC strives to support our communities' needs – even when it means getting our hands dirty at unique events, such as the highly anticipated TRACN4 National Rally.

As our communities are always at the heart of what we do, TRAC carefully considers our corporate social investment projects so that we can ensure social and economic development while also focusing on road safety.

The TRACN4 National Rally marries both of these important focus areas, enabling TRAC to promote safe driving practices while investing in our communities along the Maputo Corridor. Car rallies are not only synonymous with high speed, they are also renowned for their safety. Every regulation has to be in place, enforced by trained officials and marshals and adhered to by qualified, experienced and highly skilled drivers.

Backing the NRC

Since 2019, when TRAC came on board as a sponsor of the National Rally Championship (NRC), which falls under the auspices of Motorsport South Africa, the TRACN4 National Rally has flourished.

The first one was held at Ditsong Willem Prinsloo Agricultural Museum in Bronkhorstspruit and although it was a good venue, TRAC and the rally organisers wanted to add a more interesting dimension. This is what sparked the idea of holding it in the forest-rich Emakhazeni region. Dullstroom proved the ultimate Mpumalanga town for the championship

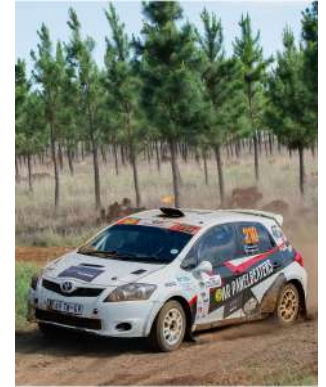
finale, with the locals embracing the event. The rally facilitates a remarkable economic spinoff for the region, as it's the ideal economic platform for participants and their families to spend money in the community. It also promotes job creation and directly benefits the Dullstroom Epilepsy Centre.

The centre, a registered non-profit organisation, co-hosts the competition and has benefited substantially from the rally in terms of spotlighting its selfless, critically important work in the province and for the nation.

The centre also benefits from TRAC's corporate social investment programme, which has ensured various infrastructure upgrades and renovations to the centre over the past two years. This has enabled it to rent out its facilities, such as its hall and sports field, to generate additional income.

Going all out!

The 2022 TRACN4 Rally theme was 'Going All Out', and this is exactly what TRAC did to ensure the final leg of NRC will be remembered for years to come.



Dullstroom was taken over by TRAC's prominent yellow, black and white and the rally was thrilling for South Africa's top rally crews and spectators, who could watch their rally heroes for the first time since Covid-19 restrictions were lifted.

Being the final leg of the National and Northern Region's Regional Rally Championships, 28 competitors went all out during the two-day competition, with Rally Technic's Chris Coertse and Greg Godrich in their Mazda-2 Rally 2 Kit proving the best of the best and walking away with the 2022 national title.

Although their luck ran out during Friday's round 11 and they retired, they came back hard on Saturday to clinch overall victory.

Second overall was Guy Botteril and co-driver Simon Vacy-Lyle of Toyota Gazoo SA, in their Toyota Starlet 2000 AWD. Salom Racing's Theuns Joubert and Schalk van Heerden, in a Toyota Yaris 2000 AWD, finished third overall. In the NRC2 championships, Gerald Klopper and Johan Aucamp took the overall accolade.

The pair proved the most consistent throughout the year. They sealed the deal in Dullstroom 10 points clear of second-placed Anton Raaths and Mari Ducasse, with Magriet Potgieter and Rikus Fourie coming in a close third.

Van Niekerk praised the event, attributing its success to the exhilarating driving, commendable sportsmanship and admirable camaraderie demonstrated by all competitors.



Photos by Dries Beetge

QUALITY CITRUS AND RUGBY LEGENDS, A SWEET COMBINATION

CHILDREN AND CARE CENTRES BENEFITTED FROM A JOINT DONATION DRIVE THAT USED RUGBY TO BRING PEOPLE TOGETHER.



When citrus farmers and South African Rugby Legends meet to do good, the outcome can only be spectacular!

This is what happened when more than 20 former Bokke, spanning 50 years' worth of players, and renowned citrus farming company Joubert & Seuns joined forces to host a magnificent Rugby Legends Day in the Lowveld's Schoemanskloof region in October 2020.

The event aimed to raise awareness of and funds for the Wenakker Home for the Disabled in Lydenburg and Silver Days Old Age Home in Waterval Boven.

The Rugby Legends also hosted a rugby clinic for youth at the Ngodwana Rugby Club and assisted Joubert & Seuns and other sponsors to pack trucks full of donations for the two care centres.

Also wanting to give back to our communities along the N4 Route, TRAC sponsored two wheelchairs, which are sorely needed at the care centres, and got the TRAC-sponsored Matsulu Mambas first rugby team to join the Legends in facilitating the rugby clinic.

The Matsulu team, who are top-notch players, leapt at this opportunity to assist with the facilitation of the clinic, proving their skills and sportsmanship whilst doing so!

Over 100 excited children got to meet their Rugby Legends and fine tune their rugby skills and will remember the day for years to come, despite it having to be held under strict Covid-19 protocols.

Seeing the smiles on the children's faces and knowing that the care centre's donations would make a huge difference in their residents' lives made the event an extra special one for TRAC's corporate social investment and public relations teams.





COMMUNITIES SCORE FROM TRAC AND RCL FOODS

SOCCER FEVER IS BACK AFTER COVID-19 IS KICKED OUT OF PLAY.



Uniting and strengthening communities is what TRAC's corporate social investment initiatives are all about. It is one of the reasons we are so passionate about community sports tournaments and support many along our route.

One of the most prominent tournaments TRAC has played a pivotal role in since 2007 happens to also be the biggest amateur soccer tournament in South Africa – the Selati Cup Soccer Tournament. Not only do rising soccer stars look forward to taking on their rivals at this annual competition, which is the brainchild of Nkomazi-based RCL Foods, but fans also flock excitedly to watch the matches – with many cheers of 'laduma' radiating throughout the stadiums!

competition not only unearths local talent but also unites youth in sports, keeping them off the street and helping them to stay active.

While the tournament sadly came to a grinding halt for two years as a result of the Covid-19 pandemic, it was back in full swing in 2022 with all teams firmly focused on taking home the cup.

In the soccer division, the defending champions from the last tournament (held in 2019), Razo Aces FC, were determined to keep their title, beating Mbombela Real Stars 5 – 1 in the final. Third place went to Mega Force, which beat Razo MDC 1 – 0.

The hotly-contested netball title was claimed by the Black Panther squad, followed by Zwelithini Stars and Hot Fighters respectively. Both winning teams received playing kits from TRAC.

While the company takes pride in being able to financially support and provide uniforms for local soccer teams and tournaments, our ultimate goal is the positive spinoffs it has on individuals and communities. Besides physical health benefits, research has shown that team sports such as soccer and netball boosts emotional development, as exercise can lead to a unique state of short-term relaxation.



The exceptional prize money up for grabs also ensures that the competition is fierce. Over the past few years, the winners of each tournament have received R100 000 cash, while the runners-up secured R60 000. The latter has been sponsored by TRAC for many years.

Sukumani Sidlale tournament back in 2022

Another major sports tournament sponsored by TRAC (since 2016) and RCL Foods is the annual Sukumani Sidlale Soccer and Netball Tournament that's held in Matsulu, Mpumalanga. Continuously gaining popularity over the past 10 years, the



Relaxation in turn promotes increased concentration, better memory, enhanced creativity, more effective problem-solving and an improved mood.

Team sports also boost the development of soft skills, such as communication, taking decisive action, teamwork and time management; while also building self-esteem and confidence and teaching the values of respect and fair play.

TRAC GIVES LEARNERS A SPORTING CHANCE

TRAC CONTINUES TO FOCUS ON SPORTS DEVELOPMENT AS ONE OF ITS KEY CORPORATE SOCIAL INVESTMENT INITIATIVES.



“Sport speaks a language that everyone can understand, and it brings people together,” says David Mahlangu, Chairperson of the Golden Eagle Netball Club.

Sport is a unique and powerful tool that transcends race, religion, political beliefs and socio-economic differences to connect people. Whether you are a star goal scorer, a keen angler, a professional athlete or an avid team fan, sport provides a platform for the development of essential skills which are crucial to navigating life.



Sports development has a profound effect on communities and as such is one of our six key corporate social investment initiatives. We thus proudly support a variety of teams and clubs along the N4 Route.

One for all and all for soccer and netball

Club soccer and netball are popular community sports for players and spectators, and provide an opportunity to escape from the daily routine and a world of crime and substance use.

The members of the Young Tigers United Football Club, located in Mjejane, are enthusiastic soccer players and dedicated to the club. Coach and manager Simon Mabasa leads the group of youngsters by example.

TRAC supported the team by providing it with playing and practice kits as well as supporting the annual prizegiving with medals and trophies. The team did well in the 2022 season, winning 95% of their games.

Mataffin Hotspurs Community Sports Club offers multi-sporting activities to the youth. Based in Mataffin in Mbombela, the club's strategy includes promoting sustainability, social inclusion and cohesion. It has more than 80 youngsters, aged 11 to 19. The 2022 season saw the Junior team (U13) emerge victorious in the Mbombela Central League.

To sustain itself, the club proudly initiated the Isinkwa Sethemba Primary Co-operative, a social enterprise project that produces and sells bread and other confectionaries to help it cover running costs. The club's manager takes a keen interest in the players' school marks, motivates them to do better and assists them to apply for bursaries.

TRAC sponsored the Mataffin Hotspurs with three much-needed team kits, for two junior teams. The kits included 16 tops, 16 pairs of shorts, a goalkeeper kit, a ball, 16 pairs of socks, a captain's band and a kitbag. The team was also provided with training bibs.

Managed by local educators, Napoli Football Club, based in Emakhazeni (Belfast) in Siyathuthuka, offers soccer, netball and basketball. The senior soccer team participates in the Men's Nkangala Regional League, and the netball and basketball teams play in the regional league. The club promotes males and females in sports and is a feeder team to all Emakhazeni schools.

The Golden Eagle Netball Club in Bronkhorstspuit focuses on growing netball in the community to help players develop quality skills and promotes fitness and a healthy lifestyle amongst the youth. The club helps youth to stay away from crime and substance use and educates them about teenage pregnancy and gender-based violence.

The club's highlights for the 2022 season include five Level One Coaching courses financed by TRAC, and six U19 male players were selected to represent Tshwane Netball in the provincial OR Tambo Cohesion Games in which the team placed second.

Nine U19 female players participated in the Tshwane Netball Legacy Programme Mini World Cup, representing team Malawi, while the Senior Men's team placed third in the Tshwane Males Netball league 2022. In the BUILD IT sports tournament, the U15 players were the champions, and also in the Gauteng Department of Sports Rural Development tournament.

The Senior players were the champions of the Youth Day (16 June) and Women's Day sports festivals.

School and individual sports

Laerskool Bergland's U13 girl's netball team received TRAC-branded backpacks for their netball tour. Ligbron Hoërskool's U15A girl's hockey team received bags for their hockey sticks for the season.

Hoërskool Ermelo's U14 rugby team had a lot of traveling to do in the 2020 season, but most of the boys come from families that could not afford the rising costs of school and sports. TRAC's sponsorship of their rugby kit and kit bags provided much-needed relief.

Even coaches need assistance sometimes! Laerskool Laeveld's cricket coaches were provided with golf shirts, ensuring a sense of great team spirit.

Running is the world's most accessible sport

Running clubs play a vital role in local communities by training, coaching and encouraging runners of all abilities. Local clubs organise races and as with all community-related sports, race organising is done within a budget and organising clubs rely heavily on support from business.

TRAC always assists by providing waterpoints, goody bags and prizes.

Specialised sports events

Tour de Farm

The Alzu Tour de Farm is a mountain bike race held annually at Alzu Petroport, one of the most iconic rest stops along the route. The event generates funds for underprivileged learners of Middelburg Primary School and Hoërskool Middelburg, as well as for residents of the Care Village.

With Alzu being a key stakeholder along the Maputo Corridor, the 2021 event saw TRAC sponsor the first aid kit for the race, as well as prize money while in 2022 we sponsored the prize money for the second, third and fifth placed competitors of the 68km race.

Platorand Endurance Ride

Hosted by the Platorand Endurance Club, this popular horse riding event is held annually in Dullstroom, a Mpumalanga town that is very dear to TRAC's heart as it also hosts one of our flagship events – the TRACN4 Rally.

The competition sees more than 100 horse riders take each other, and the challenging terrain of Dullstroom, on for 200km over three days. In 2022 TRAC got involved in this unique competition by sponsoring branded gifts for the competitors' gift packs, which ensured they would remember the occasion for years to come.

GIVING SUNRISE THE ADVANTAGE

WHILE IT'S THRILLING TO WATCH TENNIS PLAYERS BATTLE IT OUT ON THE COURT, IT'S EVEN MORE SPECIAL WHEN THEY ARE UNDERPRIVILEGED YOUNGSTERS WHO HAVE BEEN RECENTLY INTRODUCED TO THE SPORT.



Tennis benefits children in numerous ways, from helping them to build self-confidence and trust their instincts, to sharpening their problem-solving skills, learning about sportsmanship, improving mental strength and social skills and teaching them how to strategise.

As TRAC supports sports initiatives and organisations along the N4 Route that promote physical activity and community development, we were excited about assisting the Sunrise Tennis Academy (STA) when it approached us to sponsor its capacity-building programme.

The programme, run with support from the Lowveld Junior Tennis Association, teaches children and teenagers about the sport and develops coaches at schools in Ehlanzeni. The STA was established in 2020 to give children in Emjindini, Kabokweni and Kanyamazane an opportunity to learn about the sport and participate in tournaments at various levels.

Our sponsorship is also being used to host several courses during the tennis season, the first of which was held in February at the Nelspruit Tennis Club.

The event was facilitated by Tennis South Africa's Patrick Tsunke, the head tennis coach at the Arthur Ashe Tennis Stadium in Soweto. Despite Covid-19 restrictions, it was well attended by a large group of up-and-coming tennis players from all over Ehlanzeni, including some from as far as Pienaar, a township where tennis is yet to be fully discovered.

The children and coaches all had a blast, taking in every moment of the clinic, which was the first held in many months following the coronavirus outbreak.

In addition to supporting the programme, TRAC also sponsored training aids and tennis equipment to get the kids off to a better start.

RUGBY CLUBS GET THEIR KIT ON

RUGBY TEAMS TAKE TO THE FIELD PROUDLY DONNING THEIR NEW TRAC-SPONSORED KIT.



There's nothing quite like a brand-new kit to empower and uplift a team and get players' adrenaline rushing, especially when it comes to local rugby clubs that can't wait to take each other on!

Besides its extensive health benefits, sport is renowned for bringing people and communities together. This is especially the case with rugby, one of the most passionate spectator sports in the country. TRAC has thus again sponsored playing kit for the Matsulu Rugby Club and the Laeveld Leeulopers Rugby Club for 2021 and 2022, both of which are based in the Lowveld.

TRAC's Matsulu Rugby Club sponsorship for the 2022 rugby season includes kit for its Men's First XV team, the Women's Players Squad and club management, consisting of 25 team shirts, 30 team sweaters, 30 women's player shirts, six official shirts, 30 backpacks and 12 Team A4 car magnets.

Our 2022 sponsorship of Laeveld Leeulopers Rugby Club included 26 team shirts, 26 team shorts and 26 pairs of team socks for the club's Men's First XV team.

Both of the rugby teams have done TRAC proud over the years, and again flew the

company's flag high at a Rugby Club Day hosted by the Malelane Rugby Club in March 2022. The day saw 16 teams from as far as Rustenburg battle it out on the often muddy terrain of the Malelane rugby field, ensuring a tournament that was full of fun and highly competitive.

Matsulu's First XV, sporting their brand-new TRAC-sponsored kit, were outstanding in their match against Middelburg II, securing a convincing 41-29 victory. Despite not having an official home ground and training weekly on an uneven field, this team keeps proving that it has what it takes.

The Laeveld Leeulopers, sponsored by TRAC for over eight years, also gave their all during their two matches against Onderberg Ou-Manne and Kwamlusha 1, respectively. However, given that most of these guys are on the wrong side of 40 and speed is not on their side, they lost both their matches.

One of the players said the rain during the tournament took its toll, making them play 'like 10-year-olds'. He quickly added though that 10-year-olds have loads of fun and that was what the tournament was all about for the TRAC-sponsored veteran team.





TRAC

TRANS AFRICAN CONCESSIONS

TRAC

TRAC

TRANS AFRICAN CONCESSIONS

TRAC

TRANS AFRICAN CONCESSIONS

T

TRAC

TRANS AFRICAN CONCESSIONS

TRAC

TRANS AFRICAN

TRAC

TRANS AFRICAN CONCESSIONS

TRAC

TRANS AFRICAN CONCESSIONS

TRAC

TRANS AFRICAN

TRAC

C

TRAC

TRANS AFRICAN



HEALTH AND WELFARE

MEETING OUR COMMUNITIES' NEEDS

GIVING BACK TO OUR COMMUNITIES IS ONE OF TRAC'S TOP PRIORITIES.



"It is every man's obligation to put back into the world at least the equivalent of what he takes out of it." – Albert Einstein.

The dire need in our communities for basic essentials has been heightened over the past few years by the high level of unemployment, the Covid-19 pandemic and resultant lockdowns.

There are countless ways that businesses can give back to their community, from supporting a meaningful cause to assisting the most vulnerable.

Over the past two years, our focus has been on communities along our route, including those affected by the Covid-19 pandemic and extended national lockdown which resulted in financial constraints and increasing unemployment that saw many households not being able to meet their basic needs.

Bringing food to families

TRAC reached out to various communities in Mbombela, Emalahleni and eMakhazeni, providing them with food parcels to assist during trying times.

In consultation with the City of Mbombela, we donated R50 000 worth of food parcels to needy

communities in the municipal area. The non-perishable food parcels each included 10kg mealie meal, 2kg samp, 2.5kg sugar, 2l cooking oil, soup, tinned fish, baked beans and tea.

In Emalahleni and eMakhazeni, TRAC partnered with Raubex to provide food parcels to families in distress due to Covid-19. The parcels were loaded, packed and distributed under strict Covid-19 guidelines.

Charity begins at home

TRAC suppliers who assist with routine road maintenance on the N4 were also hit hard by the lack of work during the pandemic.

As a result, TRAC provided each of our SMMEs with grants to the value of 65% of their average monthly earnings. This was provided in the form of an interest-free loan payable as per agreed individual terms.

In addition, we assisted our SMMEs to comply with the strict pandemic rules and regulations by providing them with Covid-19 policy and procedure documents, training, a digital thermometer (valued at R2 000 each) and Covid-19 screenings (valued at R85 per person) at a TRAC plaza near their workplace.



Providing warmth to Mpumalanga communities

Winter coupled with the economic challenges experienced nationally due to Covid-19 left poor and vulnerable communities in crisis. With financial constraints a dime a dozen, due to the high unemployment rate, many households couldn't afford winter essentials, such as blankets.

TRAC, in consultation with the Mpumalanga Department of Community Safety, Security and Liaison, thus donated 250 blankets to local communities.

Add a little love with cupcakes

Cupcakes of Hope is committed to helping people in their fight against cancer, where they need it the most – in their homes and communities. TRAC supports the initiative by purchasing Cupcakes of Hope for our wellness and staff events, which helps the organisation raise funds to drive community interaction and grassroots cancer awareness, such as 'baking a difference' for National Cupcake Day and the #Bake4Cancer fundraisers.

Bergvlam Beauty Pageant

The annual Mr & Miss Bergvlam pageant is much more than a beauty pageant – it's a competition that encourages the contestants to get involved in various community projects and organisations. It also encourages all those who participate to look deep within themselves and discover unknown talents related to assisting others.

During the lead-up to the grand finale of this competition, the male and female finalists become ambassadors for the school's value system by giving back to those less fortunate. This allows them to learn how to think outside the box and adapt to situations outside of their comfort zone.

Contestants are encouraged to raise funds through a variety of sponsorships which are used to fund the event, as well as give back to those most in need.

In 2022, TRAC sponsored this month-long competition ensuring that it was a resounding success.



AGING IS A PRIVILEGE, NOT A PREDICAMENT

SENIOR CITIZENS REMAIN THE BEACON OF A COMMUNITY AND TRAC GOES ALL OUT TO SUPPORT THEM AND RECOGNISE THE CONTRIBUTION THEY MAKE IN SOCIETY.



“In the end, it's not the years in your life that count... It's the life in your years.” – Abraham Lincoln

Caring for our elders ensures that they feel loved and are kept safe in their twilight years. We believe in looking after those who have nurtured us. Thus, in line with our corporate social investment principles, we work closely with the Suid-Afrikaanse Vroue federasie (SAVF), one of the largest and oldest welfare organisations in South Africa.

SAVF was founded in 1904 and operates several old age homes, child and youth care centres, early childhood development centres, shelters and social work offices in South Africa.

SAVF Middelburg Old Age Home

The SAVF Middelburg Old Age Home is located in Middelburg, in the cultural heartland of the scenic Mpumalanga province.

The home takes care of the poorest of the poor, especially those from marginalised communities, by providing specialised nursing and social care for the elderly. The home also provides practical experience for the local training centre's care giver programmes.

“The resident grannies run a programme, knitting teddies for sale. TRAC purchases these teddies every two months and donates them to children who might need some tender loving care following an incident on the N4 Route, such as their parents' vehicle breaking down.

The teddies offer a bit of comfort to the children during trying times.

Residents at Silverdays never give up!

The SAVF Silverdays Old Age Home in Waterval Boven offers frail care, old age home and service centre services in Waterval Boven for senior citizens.

Its facilities include the Khaya Lami Service Centre, in Emwenya, which offers various

developmental programmes, including home-based care for the vulnerable and HIV/Aids orphans. Uniquely, the home was founded and is still run by seniors as a community-based project.

The 80 members rely heavily on support from both the community and businesses in the area.

As the home is reliant on donor funding, when we were approached to assist with upgrading the pathways and parking areas, we happily obliged. We also erected a new sign at the home and, over the past two winters, our donation of cold and flu medications, essential vitamins and boosters gave the residents the essential immune booster they needed.

The surrounding community, which includes TRAC staff members, has also come up with an initiative to raise funds or organise special events for the residents, including the 'Adopt an Ouma or Oupa' campaign.

Through this initiative, the elderly thoroughly enjoyed a day out and about at the beautiful Aloes Country Inn.

BRINGING HEALTHCARE TO COMMUNITIES

A LOCAL CLINIC WAS ABLE TO REOPEN AND OFFER PROFESSIONAL HEALTHCARE SERVICES TO ITS COMMUNITY.



The KuPhila Medical Centre which has two branches in Emakhazeni, has made a significant difference in its community with its professional medical care services and Covid-19 screening.

TRAC has had a fruitful relationship with the clinic since it became one of our enterprise

development projects in 2016. We took the clinic over from Assmang Chrome and reopened it to provide the local community with a professional, high-quality medical alternative to government hospitals and municipal clinics, and to provide medical services not covered by state-run facilities.

KuPhila Medical Centre now offers a holistic approach to medical services for individuals and businesses. It has a general practitioner and neuropsychologist, and offers medical assessments, employee wellness programmes and social work services.

Although the clinic works within the private medical services framework, its rates are lower than conventional private medical facilities. It also offers pro-bono services to qualifying members of the local community and often deals with referrals from municipal clinics in the immediate area. It is also often the only clinic open in the area when government facilities are closed.

Covid-19 screening, an additional service

During the height of the pandemic, the clinic extended its services to include a dedicated screening area for Covid-19.

The area, which was cordoned off from the rest of the medical centre to ensure patient safety, was also open to essential services companies and contractors who needed to ensure their employees were fit to return to work as lockdown restrictions started to ease.

The screening process, which was quick and easy, also included a blood sugar and blood pressure test.

“TRAC believes in investing time and capital to assist communities along the N4 Route, and we are proud to be associated with KuPhila Medical Centre,” says TRAC’s CSI Administrator, Kathleen Greeff.

“The communities living in Emakhazeni needed these important medical services due to their geographical location and the economic challenges they have experienced in the past few years. We are proud to have been able to make a difference,” she adds.

The clinic assists about 220 people a month from Machadodorp, Waterval Boven, Waterval Onder, Dullstroom, Belfast and Badplaas.



MANDELA DAY INSPIRATION DURING COVID-19

TRAC FINDS A WAY TO ASSIST ITS COMMUNITIES ON MANDELA DAY, DESPITE THE COVID-19 LOCKDOWNS THAT AFFECTED BOTH SOUTH AFRICA AND MOZAMBIQUE.

In 2020, Mandela Day came in the midst of a triple pandemic – South Africa was at the peak of our Covid-19 infections, the country was in a national lockdown and, as a result, there was mass unemployment and hunger.

Mandela Day, declared by the United Nations to celebrate Madiba's birthday, usually sees corporates and communities come together to do good for 67 minutes in recognition of Madiba's 67 years of fighting for liberation.

Given the lockdown restrictions at the time, TRAC's employees were not able to physically give of their time and interact with our communities – even at a time when they needed help the most.

This left the company in a predicament. We wanted to desperately contribute but had to find a permissible, contactless way to do so.

As the saying goes, where there's a will, there's a way, and we found the ideal solution to reach out to our communities.

TRAC's Health and Wellness Committee and Human Resources Department came up with the idea of giving selected organisations and schools along the N4 Route, portable hand washing systems.

Two of the beneficiaries were Laerskool Oosterlijn and Ebudlweni Primary School in Waterval Boven. The eco-friendly, foot-pumping Senninger systems were delivered to the recipients on 21 July, much to learners' and management's delight.

Hand washing is one of the primary defenses against Covid-19 and the gifting of these systems was highly appreciated by the headmaster of Ebudlweni Primary School.

The other 16 units were donated to Lesedi Secondary School, Kids Care Centre (Rethabiseng) and Ubhule Christian School, Bethesda House of Hope (Middelburg) and Siphosenkosi Home for the Disabled (eMalahleni). SHMkhabela Secondary School (eMalahleni) and Imvuzo Primary School Mhluzi (Middelburg), as well as Dumesizweni Primary School and Laerskool Machado also received their donations.

Nelspruit Regional Office awarded their donations to: John Mdluli Primary School and Crocodile Valley Primary School, Lethukuthula Primary School and Sibongile Primary School (both in Matsulu), and lastly, Cromati Combined School (Komatipoort) as well as God's Camp Kiddies Academy (Hectorspruit).

With Mandela Day being internationally celebrated, TRAC Mozambique also took action to inspire change by honouring the top students of Escola Secundária 4 de





Outubro in Ressano Garcia and Escola Secundária da Moamba for their commitment towards their schooling careers.

The 10 most diligent students of Escola Secundária 4 de Outubro were given much-needed study equipment and materials, as well as stationery. This included school bags, books, calculators, English/Portuguese dictionaries and maths sets.

The top 10 boys and top 10 girls from the Moamba-based school were also spoilt by TRAC and deservedly so. Each one received a TRAC- branded bicycle aimed at helping them get to school quicker and safer.

DONATED LAPTOPS TO BOOST TOURISM

TRAC'S SUPPORT OF THE MTPA CHARITY GOLF DAY AIMS TO BOOST THE ECONOMY BY UPSKILLING STUDENTS TO GROW TOURISM.



The Mpumalanga Tourism and Parks Agency's (MTPA) Gert Sibande Liberation Route Celebrations aim to position the Gert Sibande region as a renowned tourism destination by promoting the area's tourism route, which was developed in 2016.

The Charity Golf Day, which forms part of the celebrations, is hosted by the MTPA and the Mpumalanga Department of Local Economic Development at Gert Sibande District Municipality. It aims to engage key strategic stakeholders to raise funds towards a Bursary Fund for previously disadvantaged students who are interested in studies in the tourism and hospitality sectors.

The aim of the 2022 golf day was thus to raise money to buy laptops to donate to these learners.

In line with TRAC's corporate social investment skills development programme, we sponsored 10 Mecer laptops, valued at R50 000, and donated another R50 000 to ensure the event's success.

The laptops will assist top-achieving tourism students with their studies, by making learning easier and more convenient and enabling them to become technologically savvy and independent. The laptops will also enable the students to access numerous online libraries.

Five local schools from the district municipality benefited from the initiative, namely:

- Govan Mbeki Local Municipality: KI Thwala High School.
- Chief Albert Luthuli Local Municipality: Ngilandi Secondary School.
- Mkhondo Local Municipality: Ubuhlebusile Secondary School.
- Dr. Pixley Kalsaka Seme Local Municipality: Hlemlimfundo Secondary School.
- Dipaleseng Local Municipality: IM Mantshu Secondary School.



OLD BUT ALWAYS TRENDY, THAT'S OUR JOE

LEGEND HAS IT THAT OLD JOE LOOKS AFTER ROAD USERS ON THE N4 ROUTE, HENCE THEY OFTEN HOOT OR WAVE WHEN PASSING HIM ON THE PATATANEK PASS.



Road users travelling between eNtokozweni and Mbombela who use the PatataneK Pass can't help but keep an eye out for Old Joe to see what he's up to now!

Old Joe, a unique rock situated along the PatataneK Pass, has a long and rich history with TRAC, as the custodian of the N4 Route.

The unusual shape of the rock lends itself to being painted and transformed to mark various occasions, big national and international sports events and charitable causes; and to honour people, such as struggle icon Nelson Mandela.

Between 2020 and 2022, TRAC recreated Joe's character numerous times, including utilising the landmark to generate awareness around Covid-19. He has also been transformed into a rhino, the Easter Bunny, a springbok and, to many road users' delight, Victor Matfield.

TRAC's corporate social investment priorities include supporting local artists and we therefore commission Mbombela artist Ghost to use his magical talent to transform Joe into his endless characters.

Joe's latest transformation was into TRAC's official mascot, also aptly named Joe, in celebration of TRAC's launch of its new corporate identity in 2021.

Imagine how interesting life would be if we could recreate ourselves as often as Joe does!



Old Joe was discovered in 1927 by workers during the construction of the first road through Schoemanskloof. The workers said the rock resembled their boss Joe Barabas, who was the construction project foreman at the time. In his honour, they erected the granite rock on the side of the road, painted it and affectionately named it 'Old Joe'.

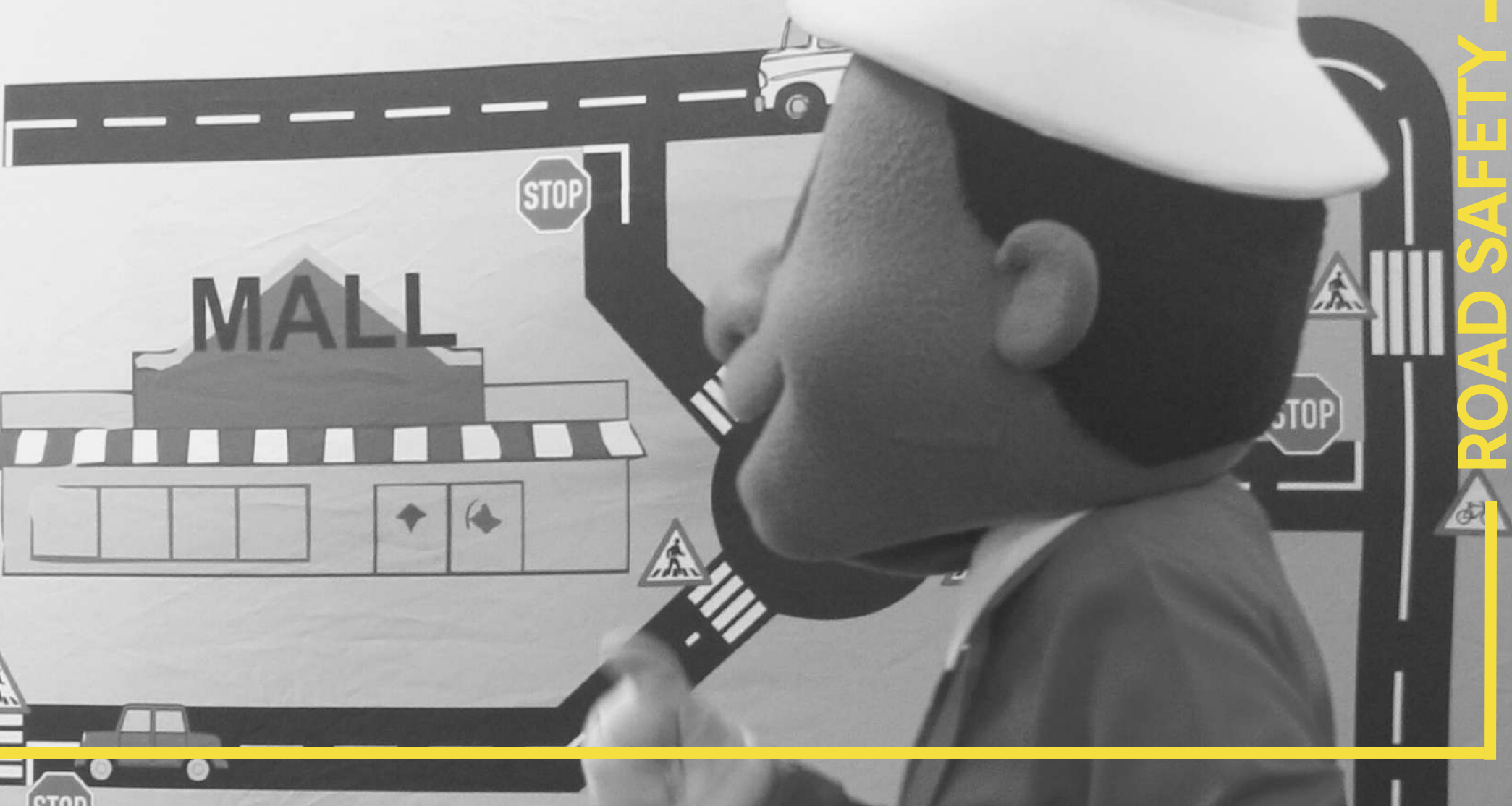
As the concessionaire of the N4 Route, TRAC has taken on the role of Joe's 'guardian' and makes sure he's always up to something new. He has had many 'personalities' and has generated awareness around various causes and events over the years.



Road Safety with



with SIPHO



ROAD SAFETY

STOP

DRIVING SOCIO-ECONOMIC DEVELOPMENT

A REFURBISHED BUILDING WAS ALL IT TOOK TO PROVIDE BELFAST COMMUNITY MEMBERS THE CONVENIENCE OF OBTAINING THEIR DRIVER'S LICENCE AND RENEWING THEIR LICENCE DISCS.



As improving lives and livelihoods in communities along the N4 Route is the ultimate aim of TRAC's corporate social investment initiatives, helping people to renew or obtain their driver's license is a major step in the right direction when it comes to helping people gain employment and earn a living.

TRAC facilitated this with its R1.3 million refurbishment of the Belfast Testing Centre in eMakhazeni over a period of two years.

The goal was for TRAC to become more actively involved in the communities in and around the town of Belfast, now known as eMakhazeni, which is located on the N4 Route.

The project commenced in 2019 after TRAC signed a Memorandum of Understanding with the eMakhazeni Local Municipality to support the local community.

After ensuring that authorisation from the relevant bodies was in place, we got to work to renovate the existing building and refurbish the admin block. We also ensured a temporary boost to the local economy by employing local contractors, businesses, and skilled and unskilled local labour for the duration of the project.

As the community has faced many challenges over the years, TRAC wanted to reach out, make a difference and ensure socio-economic development by empowering the community. The restored building has since opened many doors to a brighter future.



EASING BORDER CONGESTION TO ENSURE ROAD SAFETY

AS WE HAVE NO CONTROL OVER THE DAY-TO-DAY RUNNING OF THE LEBOMBO AND RESSANO GARCIA BORDER POSTS, WE HAVE IMPLEMENTED VARIOUS SOLUTIONS TO ASSIST OUR ROAD USERS.



With TRAC being one of the major drivers of economic development along the Maputo Corridor, it is in our and our stakeholders' best interests to ensure that the international crossings linking South Africa and Mozambique on the N4 function optimally.

Given that the TRAC N4 Route is undoubtedly one of the busiest trade corridors in Southern Africa, and a tourism driver to popular destinations in the Lowveld and Mozambique, the constant pressure which the Lebombo (South Africa) and the Ressano Garcia (Mozambique) Border Posts experience daily is understandable.

On regular business days, these facilities process thousands of vehicles and travellers, while peak traffic periods, such as school holidays and long weekends, see this number increase significantly. This results in major traffic congestion at these entry points and additional stress on infrastructure and for border officials.

One of the biggest and most regular problems experienced at these two borders is the multitude of cargo and delivery trucks waiting to be processed every day. These vehicles are forced to queue on the N4 while awaiting their turn – an exercise that can take hours, sometimes even days. This results in kilometres of vehicles enroute to the border queuing on the N4, which negatively impacts road safety.

In addition, increased commercial vehicle processing times at the border post has a negative impact on the economies of South Africa and Mozambique as it limits export potential via the Maputo Port as well as general trade between the countries.

The implementation of a planned One-Stop Border Post (OSBP) will address these delays.

However, due to the time required to procure and implement the OSBP, TRAC decided to assist with shorter-term interventions to improve the attractiveness for exporters and ensure that capacity is available to accommodate current and future export and import demand.

In consultation with border management and other stakeholders, TRAC made improvements to traffic flow on the heavy vehicle 'bypass' by creating a dedicated third lane for bulk carriers and addressed the broken gate between the countries that limited traffic flow. We also worked closely with stakeholders, pushing for these border posts to be operational 24/7. Our hard work paid off and the border has been operating 24 hours a day since early 2022.

The safety and security of our road users are also always top of mind. When criminal elements started targeting unsuspecting road users near the Lebombo Border on a regular basis, TRAC committed to boosting security in the area. This was done through the installation of five, top-of-the-line Pan Tilt Zoom CCTV cameras between the Komati Weighbridge and the border.

BETTER ROADS EQUAL A BETTER QUALITY OF LIFE FOR ALL

WE BELIEVE THAT BUILDING, REHABILITATING AND MAINTAINING ROADS DOESN'T ONLY IMPROVE LIVES TODAY, BUT FOR GENERATIONS TO COME!



As the concessionaire of the TRAC N4 Route, it is our firm belief that improving and rehabilitating feeder roads along our highway is imperative to the economic growth of communities and provinces we directly serve, and the Southern African region as a whole.

Safe roads are vital for the efficient transport of goods and services, promoting greater productivity in all areas. Moreover, safe, secure road travel brings a myriad of social benefits to people, such as enhanced access to job opportunities, education and recreational activities.

Given TRAC's core business—that of developing and maintaining road

infrastructure – we are committed to not only improving the N4 as a whole but also offering road repairing assistance for some roads that N4 road users travel daily to reach the Maputo Corridor.

eNtokozweni

When it came to our attention that certain roads in eNtokozweni were in desperate need of some tender loving care, TRAC and a local contractor – New Roads – jumped at the opportunity. During the preliminary inspection of Molen Street and other roads, it became evident that these structures were in critical need of attention.

Molen Street was the first to get a facelift, with slurry surfacing being done all the way to Potgieter Street. The tar road in front of the local school, and the nearby block paving were second on our to-do list. Approximately 120m of the road in front of the school was patched with millings and the contractor also cleaned the drainage structures around the education facility. In addition, the block paving which surrounds part of the school was in a very poor state and we used asphalt to repair the damaged surface.

This small, but essential rehabilitation initiative was praised by the school fraternity and the community too. In fact, the locals were so pleased with the work that soon after it was completed we were requested to also do further repairs in Molen Street and some of the main roads in the Emakhazeni town.

Flood relief

When parts of Mbombela in Mpumalanga were damaged by intense floods at the start of 2021, the Kanyamazane communities were severely affected. The heavy downpour not only destroyed many homes and buildings, it also flushed away key roads which impeded residents from using their regular routes to reach their daily destinations. TRAC and Raubex, which was at the time managing the Karino Interchange upgrade, came to the community's aid as follows:

Tekwane South

- Roads repairs and patching.
- Fixed access roads.
- Provided graders, tipper trucks and 10 loads of sub-base material and 40 bags of cement to local schools and churches for flood damage repair work.



- Donated six loads of sub-base for repairing damaged houses.
- Donated bitumen, small tools, cement, sand and sub-base material to assist in the repair and patchwork on the damaged bypass road.

Tekwane North

- Donated 20 loads of sub-base material and two pallets (80 bags) of cement.
- Donated gabion stones and 20 loads of filling material.

SHOWING SUPPORT FOR THE NATIONAL DEVELOPMENT PLAN

OUR CSI PORTFOLIO IS A FOCUSED AND PROGRESSIVE PROGRAMME MANAGED AND ADMINISTRATED BY PASSIONATE INDIVIDUALS WHOSE LOVE FOR EQUALITY, PROSPERITY AND PEOPLE-DEVELOPMENT DRIVES THEM TO DO MORE.



Guided by a standard policy framework, the company's corporate social investment activities are coordinated with relevant internal and external stakeholders to ensure every CSI initiative has a far-reaching effect.

Besides long-term initiatives, we assist other essential stakeholders such as government departments, municipalities, state organisations, and private companies operating along or on the N4. This assistance may take various forms, such as supplying equipment, goods and materials so that they can execute projects more effectively.

Bronkhorstspuit 911 responders

Bronkhorstspuit 911 is a safety and first aid non-profit organisation established in 2020 to improve the response to incidents and emergencies in Bronkhorstspuit, which borders the TRAC N4 Route.

The organisation's vision is to unite emergency responders in one communication system and, since its inception, the unit has grown in leaps and bounds. It currently handles an average of

180 emergency calls per month, attends to most emergencies in the region and, in 2022, hosted its first road awareness campaign.

However, as with most NPOs, funding is often a challenge and, in its infancy, the group was under pressure to perform even basic functions due to a lack of basic equipment and personal protective equipment (PPE).

Understanding the urgent need, TRAC did not hesitate to assist the organisation by sponsoring uniforms, PPE and other vital gear namely paramedic jumpsuits, golf shirts, winter jackets, reflective jackets and medical red Jump bags.

TRAC also sponsored tablets for responders to capture data and issue reference numbers.

PPE for CoGTA

When the Mpumalanga Department of Cooperative Governance and Traditional Affairs (CoGTA) rolled out its Youth Waste Management Project in Nkomazi and called on TRAC for

support, we didn't hesitate to commit. The initiative, which aims to curb youth unemployment and reduce poverty in the province, is operational in four Mpumalanga municipalities. It sees local youth complement municipal waste collection and management functions by collecting waste in and around their municipal area. With Nkomazi being one of our main catchment areas, it only made sense to support this programme.

Since its initiation, the initiative has enjoyed emphatic growth. During the 2020/21 fiscal year alone, it created 140 jobs in four Mpumalanga municipalities, 35 of which were in Nkomazi.

TRAC's assistance came in the form of a donation of PPE, enabling those in the programme to conduct their work safely and efficiently.

Kaapmuiden SAPS

A stone's throw away from the Nkomazi Toll Plaza on the TRAC N4 Route, the Kaapmuiden South African Police Service (SAPS) station plays a crucial role in the safety of our road users, employees and other stakeholders.

The Station Commander, concerned that the officials there were not having their basic needs met in terms of nourishment during their shift, highlighted these needs to TRAC. As the station is far from convenience stores or shopping centres, officers could not bring food to make due to a lack of a fridge/freezer and stove.

The station commander requested this from TRAC which we happily donated.

DCSSL School Road Safety Debate

The Road Safety Debate Competition is an annual Department of Community Safety Security and Liaison (DCSSL) initiative that teaches high school learners road safety in an interactive, conversational way.

Participating learners research and obtain information on road safety topics and motions and debate ways to curb road accidents. The first phase of the competition involves the district finals attended by selected schools from each district - Nkangala, Gert Sibande and Ehlanzeni. The top schools from each district then go to the provincial final, where they compete for a place in the National Road Safety Debate final, in which all nine provinces compete.

In 2021, TRAC supported the Ehlanzeni Regional Debate by providing food and beverages for the participating 225 learners from nine regional schools.

According to the event organiser, Andrew Mdluli, many of the learners participating in the event came from impoverished backgrounds and had this sponsorship not transpired, most would have gone the entire competition without food or something to drink. Given that each district event can take a full day, he felt it imperative to ensure the competitors were well-fed and hydrated to perform better.

TRAC couldn't have agreed more and was thrilled to be able to help!



ONE LIFE LOST IS ONE TOO MANY

RENOWNED REST STOPS ON THE N4 NOT ONLY HELP TO REFRESH ROAD USERS TO ENSURE THEIR SAFETY BUT ARE ALSO A ROAD TRIP HIGHLIGHT FOR MANY HOLIDAYMAKERS.



Ensuring that road users stay safe on N4 Route is no small feat, especially when you consider that the 570km road runs all the way from Gauteng to Maputo.

That's why, as the concessionaire of the N4, TRAC continues to do all it can to ensure road user safety, prevent accidents and ease congestion along the route – especially over Easter, December and public holidays when traffic volumes surge.

TRAC's road safety and swift response campaigns are thus held every Easter and December at Alzu Petroport, near Middelburg, and other appropriate sites along the route.

Not only do our road safety activations generate awareness around road safety, TRACAssist and the TRAC 24-hour Helpdesk, but they also offer road users the opportunity to relax and refresh with a delicious coffee – ensuring they are fresh and alert when they get back into their vehicles to continue their journey.

In April 2022, road users who engaged with the TRAC information team also received a small promotional gift aimed at keeping them connected to the Maputo Corridor throughout their travels, while children delighted in painting

Easter eggs and got to meet our road safety mascot Joe, who handed out lollipops. Our furry friends weren't forgotten either. They enjoyed a watering hole and small treat hampers.

Our road safety message, which educates families about the principles of travelling safely, is presented through reading material and Joe, who interacts with the public.

TRACAssist units are stationed at strategic points along the route – from early morning to late evening – throughout the campaign to reduce response times to roadside emergencies and incidents. Other emergency services, such as private and public ambulance services and paramedics, fire and rescue, provincial traffic authorities and the South African Police Service, are also stationed at these key locations.

The campaigns are led by TRACAssist and the TRAC Helpdesk, with the latter serving as the communication hub. The helpdesk, which is literally a phone call away, is the first to be alerted to incidents along the route and is thus the link between road users and emergency response units.





This call centre can perform this function with ease as it has access to ground-breaking incident and accident management software.

TRAC's responsive website also offers a click-to-call option, enabling road users to call toll-free for assistance in real-time.

Although TRAC is not responsible for border post operations, it also works with the management of both the Lebombo and Ressano Garcia Border Posts to assist with traffic management en route to these international crossing facilities. Assistance includes the provision of water, portable toilets, signage, and other traffic-related support.

CATTLE VISIBILITY PROJECT TAKES SHAPE

TRAC HAS PARTNERED WITH GOVERNMENT AND SMALL-SCALE FARMERS TO PREVENT ACCIDENTS ON THE N4 ROUTE.



With much of the N4 Route, between Tshwane and Mozambique, running parallel to farmlands and highly populated rural areas, there have been several incidents where unsupervised cattle roamed onto the highway. This posed a serious threat to road users.

Despite TRAC's ongoing interventions to curb this, such as the erection of fences along the route and the implementation of various other safety measures, the problem persisted in certain regions. And although the whereabouts of livestock are the responsibility of their owners, the danger that roaming cattle pose to motorists can not be ignored. With this in mind, TRAC had to find effective solutions to at least prevent road users from crashing into these animals.

As we are not legally permitted to physically remove the cattle off the road, a different, innovative method to curtail this dilemma had to be sought. After various possible solutions were tried and tested, we came up with a unique, yet simple solution which does not keep them off the road, but at least makes them more visible, especially at night.

Just as runners and cyclists wear reflective bands for protection, TRAC and the

Mpumalanga Department of Agriculture, Rural Development, Land and Environmental Affairs decided to 'tag' cattle with reflective bands in a bid to make them more visible to road users, especially at night, should they escape their farmland.

The pilot programme was launched in two hotspots – Hectorspruit and Matsulu – and saw TRAC hand out reflective bands to local farmers while also engaging with them on road safety. To further boost our efforts, we also employed two community members to cycle up and down the N4 in these hotspots, to chase cattle off the road and, if necessary, call the TRACAssist teams to help.



NEW WALKWAY ENSURES LEARNER SAFETY

NKOMAZI LEARNERS NOW NO LONGER HAVE TO WORRY ABOUT WALKING ALONG A BUSY HIGHWAY TO GET TO SCHOOL.



TRAC has proudly built a new walkway, and extended it through the existing underpass in the Nkomazi Local Municipality, between Stentor Village and Kaapmuiden Primary School, to ensure that learners no longer have to walk to school along the verge of the busy N4 highway.

Most pedestrian accidents are caused by motorist negligence or pedestrians who walk across the road at unmarked areas. Pedestrians are especially vulnerable when motorists are coming around a blind corner or have an obstructed view of the road.

TRAC's corporate social investment priorities involve the safety of the Maputo Corridor's road users and as such, we ensure that the route not only meets world safety standards but that we educate our communities about road safety too. Learners who have to walk to and from Kaapmuiden Primary School had no alternative but to walk along the busy N4. To help keep them safe, TRAC decided to build a walkway, valued at R2.5 million between the two villages.

The walkway was also extended through the existing underpass, close to the Stentor

community, which required the design and construction of an elevated structure manufactured from special composite material. Local contractors, SMMEs and labourers were utilised during construction, boosting the local economy.

To ensure longevity, the surface area, where the walkway is situated, was first stabilised using old block paving that was removed from the toll plaza during construction along the N4.

In addition, to further ensure pedestrian safety, the speed limit in the area was reduced to 80km. TRAC also constructed a bus turning point in Stentor, ensuring commuters' safety when entering and exiting their buses.

TRAC is happy to see that many other community members are now also making use of the walkway to get from one village to the other, and we are proud to have been able to assist them in this way.

LITTLE ONES ALWAYS EAGER TO LEARN ABOUT ROAD SAFETY

LAUNCHED IN 2014, TRAC'S SCHOOL ROAD SAFETY PROGRAMMES CONTINUE TO KEEP LEARNERS SAFE ON THE ROAD.



TRAC's school road safety activations were back in full force as soon as Covid-19 lockdown regulations were lifted.

According to the World Health Organisation, road traffic fatalities and injuries constitute a major health and development problem the world over but especially in the Southern African Region. As such, TRAC's road safety awareness programme focuses on learners, teaching them various road rules and how to cross roads safely.

After a two-year hiatus due to Covid-19, our team and our road safety mascots - Joe and Siphos - visited numerous schools along the N4 Route. This was Joe's inaugural appearance in the TRAC School Road Safety Project, following the company's rebranding in 2021.

They focused on teaching the children the importance of obeying road safety regulations which is the foundation needed to enable them to become responsible, respectable and courteous road users.

TRAC's Road Safety for Scholars play is aimed at children aged five to nine.

The 20-minute educational performance, starring Siphos and Joes and their friends, teaches learners easy-to-remember basic road rules through acting, singing and child-friendly road safety songs and signs.

The campaign focuses on rural and urban schools and teaches the importance of looking before crossing the road or getting off public transport, not letting the driver talk on the phone or drink alcohol and wearing a seatbelt, to name a few.

Ten schools were visited, benefiting over 4000 children, namely Sugar & Spice (Mbombela); Thushanang Primary School (Mhluzi, Middelburg); Curro Bankenveld and Mapule Sindane Combined School (Emalahleni); Vezulwazi Primary School (Bronkhorstspuit); Kutumela-Molefi Intermediate Farm School (Donkerhoek); Laerskool Machado (Machadodorp); Ebhudlweni Primary School (Waterval Boven); Thanda Primary School (Mjejane) and Riverview Prep (Malalane).

We also presented the play to children at the Innibos Family Festival, which was held at Kwanyoni Lodge in October 2022.





The programme gains momentum

When launched in 2014, the programme focused solely on passenger safety. As it gained momentum and grew in popularity, we incorporated pedestrian safety too.

To date, the programme has reached over 10 000 learners along the route and has become so popular that we often get requests from schools to present the play to their learners as part of their road safety curriculum.





MAPUTO CORRIDOR

EMPOWERING PEOPLE AND CHANGING LIVES

TOGETHER WITH THE INFRASTRUCTURAL DEVELOPMENT OF THE N4 ROUTE, TRAC HAS A PRIVILEGED RELATIONSHIP WITH COMMUNITIES ALONG ITS 570KM HIGHWAY, INCLUDING THOSE IN MOZAMBIQUE.



Being the only cross-border concessionaire in Southern Africa, our objective is to identify and assist these communities with various social, economic, environmental and infrastructural needs. Just as with the South African communities we serve, we invest in our Mozambican communities in the hope of also giving them a fair and just opportunity to improve their lives and secure a brighter future.

Our corporate social investment initiatives in Mozambique bring us closer to these communities. Since the inception of our concession in 1997, we have focused on numerous projects aimed at economically empowering local communities, boosting small and medium enterprises and transferring skills to individuals and groups.

Gender-based violence (GBV) is a reality of modern society, with countries such as South Africa and Mozambique still prone to this social ill. GBV can cause long-term physical and mental health problems for not only the victims, but also their children, families and communities. These effects include harm to an individual's health, possibly long-term harm to children, and harm to communities, such as lost work and homelessness.

Although in recent years the fight against GBV has intensified the reality is that gender violence is a scourge facing women. This resulted in TRAC joining hands with civil rights organisation CAPAZ, in various initiatives and programmes aimed at empowering GBV victims and their loved ones.

CAPAZ is a community-based non-governmental organisation that supports victims of GBV, as well as children whose parents have died from HIV. The name of the facility indicates the dual meaning of enabling and peace, and refers to its goals of building women's capabilities and offering victims a place of peace where they can find their true selves.

In line with the Memorandum of Understanding between this organisation and TRAC, a team of 12 women who were selected by CAPAZ to tutor the centre's HIV orphans collect litter from the V-drains along the N4 (between the Shoprite Intersection and the viaduct) three times a week. They also assist with waste collection at some of the schools affiliated to TRAC's CSI programme thus ensuring a win-win for all concerned.

MAKING A MARK AT FACIM

TRAC CONTINUES TO IMPROVE LIVES AND LIVELIHOODS IN MOZAMBIQUE, AS IS EVIDENT IN THE FEEDBACK RECEIVED AT THE ANNUAL MAPUTO INTERNATIONAL FAIR.



The annual Maputo International Fair (FACIM), which in 2022 celebrated its 57th edition, is one of these events.

Having been cancelled in 2020 and 2021 due to Covid-19, the 2022 edition of this by-invite-only fair was highly anticipated and did not disappoint! Twenty-two countries, including South Africa, and 350 companies were represented at the event, which hosted more than 50 000 visitors.

As a week-long trade fair, FACIM provides local and international companies – from a diverse range of sectors including agriculture, commercial and industrial – the opportunity to showcase their products and services.

Exhibitors use various techniques to disseminate their message, including traditional marketing methods such as product displays, product and service demonstrations and product sampling. The event also consists of presentations, lectures and workshops on selective and trending topics.

TRAC has supported the event since 2014 and, in 2022, made full use of the opportunity to showcase to the world all that the company

has, and continues to do, for economic development in the SADC region and for road users and communities along the 570km Maputo Corridor.

The TRAC stand was manned by Mozambican-based TRAC staff, who were thrilled to be able to share the company's successes and to teach patrons more about what TRAC does for its stakeholders, the two countries it directly serves and Southern Africa as a whole.

Since the start of our concession in 1998, TRAC has become a household name in Mozambique and the reaction of all those who visited the stand proves that the company is highly regarded.

Our dedication to improving the N4's infrastructure in Mozambique, as well as our ongoing commitment to uplifting lives in Mozambican communities along the route, has earned us a formidable reputation as a responsible, caring corporate that has improved lives and livelihoods and continues to do so.



With one of TRAC's primary objectives being to promote trade and economic growth between landlocked South African provinces and the Port of Maputo, it makes sense for the company to support events that have similar goals.

KEEPING SCHOOLS OPEN DURING COVID-19

ENSURING LEARNER SAFETY AND ACCESS TO EDUCATION DURING THE PANDEMIC WAS A TOP TRAC PRIORITY.



TRAC has always been committed to improving lives through education – in South Africa and Mozambique.

As the concessionaire of the Maputo Corridor, improving access to education – which in turn reduces poverty in our communities – is one of our key corporate social investment initiatives.

One of Mozambique's greatest education challenges is a lack of infrastructure to accommodate the high teacher-to-learner ratio. Teachers are greatly outnumbered by learners in classrooms which, in turn, can negatively impact the quality of education.

Striving to make a difference, we thus contribute to the development of various schools along the Maputo Corridor, through construction and upgrades. This creates better learning facilities and more teaching positions, which benefits everyone.

Escola Primaria do Lingamo, situated a stone's throw away from the TRAC Maintenance Centre in Matola, has been a TRAC beneficiary for many years. Its 3 000 learners benefited from the school's extensive upgrade starting in 2019, which included the building of five much-needed classrooms.



When the Covid-19 pandemic hit in 2020, the state school, much like most others in the country, was unprepared for the restrictions imposed on learners and staff to prevent the spread of the virus. With so many learners at the facility daily, it was imperative for the school to implement Covid-19 safety measures so that it could continue to operate.

TRAC was ready to assist and installed taps and washbasins throughout the school. The children were taught how to wash their hands properly, in line with Covid-19 requirements and protocols.

We also conducted renovations at the school and painted the administrative block and classrooms.

To ensure the school's grounds remained clean, which instilled stakeholder pride, TRAC also continued to manage the school's waste collection and placed bins throughout the grounds. We also regularly visit the school to generate awareness about why it's important not to litter and how to dispose of refuse responsibly and in line with environmentally safe practises.

PUTTING ROAD USERS FIRST

ONE OF THE MOST IMPORTANT PRIORITIES AS THE CONCESSIONAIRE OF THE N4 ROUTE IS TO KEEP PEOPLE SAFE.



It's not every day that a toll road concessionaire and its employees receive recognition from big corporates and the general public. But, as we all know, TRAC is not an ordinary company, thanks to our committed and dedicated employees.

When pedestrian accidents started increasing on certain sections of the N4 Route in Mozambique, TRAC's employees stepped in to keep our road users safe.

In 2020, Mozambique maintenance manager Fenias Mazive launched a simple, but effective pedestrian safety initiative which saw TRAC and TRACAssist employees engage daily with pedestrians on Sections 19 and 20.

During these one-on-one sessions, pedestrians were taught basic pedestrian safety regulations, including the benefits of wearing bright or light colours when walking next to the road, the dangers of using their mobile phones while en route and the importance of using pedestrian bridges or designated intersections when crossing a road like the N4.

The campaign focused on one-on-one interactions and included the procurement and

implementation of several other road safety elements, including the erection of fencing at pedestrian bridges and along the road between Shoprite and the Maputo Toll Plaza.

A median barrier was also constructed and speed humps installed on Section 19.

TRAC donated a hi-tech, top-of-the-line speed camera to monitor speeding between Sections 18, 19 and 20, which TRAC will maintain. The streetlights installed will also be maintained by TRAC, and we will assist with improvements to the Mozal/EN4 slip lane after engagement with stakeholders in this regard.

The Mozambique maintenance team did such an excellent job that Mozal, a prominent aluminum smelting facility in Matola, personally commended TRAC for leading the pack when it comes to putting the lives and safety of road users first.

The initiative was also promoted on TRAC's social media pages, which generated much traction and further assisted our endeavours to make the N4 Route the safest national road in South Africa and Mozambique.





INFRASTRUCTURE DEVELOPMENT AND MAINTENANCE BOOST EDUCATION

OUR CORPORATE SOCIAL RESPONSIBILITY LEADS TO PERMANENT AND MEANINGFUL CONTACT WITH THE COMMUNITIES SURROUNDING THE N4, WHICH ENABLES US TO ASSIST WITH THEIR MOST URGENT NEEDS

In line with our corporate social investment mandate we offer an integrated approach focused on facilitating local economic power through the participation of small and medium-sized enterprises, training and capacity building. We also concentrate strongly on infrastructure development, especially at school level, to ensure learners have access to quality education.

Escola Secundaria da Matola

It's not every day that one comes across a school with 10 000 learners, but this is precisely the case for one of our Mozambican beneficiaries – Escola Secundaria da Matola.

One would expect a school of this size to buckle under the pressure of having to tend to so many scholars, however, the exact opposite is true when it comes to this school. The school's management and faculty are passionate about their roles in the learners' lives. For years, they have tackled every challenge, transforming most obstacles into positives, with the knock-on effect evident when visiting the learning facility.

Despite all the challenges, Escola Secundaria da Matola remains committed to providing quality education. Although academically, the school is doing well, it has struggled to maintain its buildings and structures at optimal levels.

With TRAC Mozambique being known for its charitable assistance to education facilities, the school's management asked TRAC to help with repairs to its sports

facilities and general maintenance. We were also requested to build a boundary wall for the facility. The latter was the school's most urgent request, as the lack of a wall left the institution vulnerable to criminal elements.

In just a few months, TRAC built the boundary wall and renovated the school's sports pavilion. We also repaired the school's basketball courts which ensured that the school was again able to provide a well-rounded education encompassing academics and sports. In addition, TRAC refurbished and repainted the headmaster's office and the school's corridors.

Xivonanheleti Primary School

Another school that has benefited tremendously from TRAC's CSI programme is Xivonanheleti Primary School.

At the end of 2019, this learning facility was struggling to accommodate the thousands





of learners that enter its gates daily and appealed to TRAC for assistance. The school not only required additional classrooms, but its administrative block was lacking in basic infrastructure. Water accessibility at the school was also a huge problem as was the sanitation system.

In view of this, TRAC embarked on an extensive infrastructure development project at the school which included the building of two classrooms, an administrative block, a canteen, ablution facilities, as well as a warehouse to be used as an archive facility. In addition, three water tanks were donated to alleviate the water shortages this learning institution had to deal with on a regular basis. Seventy double school desks for students and four desks for educators were also provided.

A MESSAGE FROM OUR CSI EXECUTIVE MANAGER

“WHAT COUNTS IN LIFE IS NOT THE MERE FACT THAT WE HAVE LIVED. IT IS WHAT DIFFERENCE WE HAVE MADE TO THE LIVES OF OTHERS.” – NELSON MANDELA



TRAC has come a long way since its inception and, as the concessionaire responsible for the N4 Maputo Development Corridor, we focus our efforts on communities and towns along our route, which is equally as important to us as improving and maintaining the road itself.

Our commitment speaks directly to the main objective of the 1996 Coordination Agreement between the presidents of South Africa and Mozambique, namely: “The promotion of the interests of the Economic Rehabilitation Programme... by developing community health,

education and service infrastructure and addressing issues of sustainability, poverty and access to basic needs and services....”

This edition of TRAC's corporate social investment coffee table book commemorates the 25th year of the TRAC journey and all the articles contained in this book were written by our TRAC employees, reflecting their passion for the projects they are involved in. These projects cover an array of focus areas, namely education; the environment; health and welfare; sports and culture; road safety and small medium and micro enterprise (SMME) development.

In 2022, South Africa experienced an economic downturn and increased unemployment which were unfortunately exacerbated by the lingering aftermath of the Covid-19 pandemic. Going forward, South Africa needs strong leadership and partnerships between the government and the private sector to remedy the devastating impact our economy has suffered over the past three years.

A combination of government funding challenges and interference in service delivery has left many local communities with health risks, such as the pollution of critical water sources and arable land. As a water-scarce country, South Africa is

also particularly vulnerable to the impacts of climate change, which has intensified extreme weather events such as floods. Unsafe levels of air pollution are in breach of the people's rights and to this end, the High Court of South Africa in Pretoria issued a landmark judgment on 18 March 2022, ordering the government to clean up the environment in the Mpumalanga province.

Last year, a substantial number of children dropped out of school in South Africa, and an alarming percentage of children with disabilities are still excluded from education.

In such times of adversity, CSI becomes critically important. Rebuilding the economy and people's lives will rely heavily on the way in which government, businesses, and individuals are able to invest in both capital projects and the people of our country.

CSI starts with good corporate citizenship. If a company's workforce follows strong moral and ethical standards in their everyday lives, this will positively influence the quality of the projects they are a part of. I am proud that over years, this principle of investing in people and communities has grown into long-term

relationships between TRAC and our CSI project beneficiaries.

I strongly believe that creating hope is a very important goal of CSI. As Dr Judith Rich writes: "Hope is a match in a dark tunnel, a moment of light, just enough to reveal the path ahead and ultimately the way out." With our CSI projects, we provide better education for a better future. We implement and improve infrastructure for better living and learning conditions. Through the development of SMMEs, we create hope for economic development.

Investing in good causes through CSI projects will play a vital role in rebuilding the economy and giving people hope.

Despite the economic impact on TRAC's revenue, the Board of Directors has increased the budget allocation with the Consumer Price Index (CPI) towards CSI projects. We will remain committed to our long-term projects until the end of our 30-year contract.

In this book, we have illustrated how we bring about change through our upliftment projects and passionate team players. I trust that you will enjoy reading the stories and that they will inspire you to participate in making a change through the upliftment of our society in general, no matter how small your contribution may be.

To quote Archbishop Desmond Tutu: "You might not be able to do a great deal, but start where you are and do what you can where you are."

